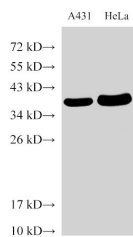


GAPDH Polyclonal Antibody

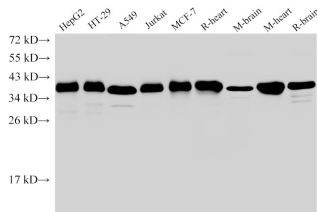
| | | | |
|---------------------|---|-------------------|--------|
| Catalog No. | E-AB-40337 | Reactivity | H,M,R |
| Storage | Store at -20°C. Avoid freeze / thaw cycles. | Host | Rabbit |
| Applications | WB,IHC | Isotype | IgG |

Note: Centrifuge before opening to ensure complete recovery of vial contents.

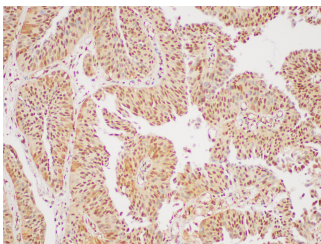
Images



Western Blot analysis of A431 and HeLa cells using GAPDH Polyclonal Antibody at dilution of 1:5000



Western Blot analysis of HepG2, HT-29, A549, Jurkat, MCF-7, Rat heart, Mouse brain, Mouse heart and Rat brain using GAPDH Polyclonal Antibody at dilution of 1:5000



Immunohistochemistry of paraffin-embedded Human bladder cancer using GAPDH Polyclonal Antibody at dilution of 1:400

Immunogen Information

| | |
|------------------|--|
| Immunogen | Recombinant Zebrafish Glyceraldehyde-3-phosphate dehydrogenase protein |
| Swissprot | Q5XJ10 |
| Synonyms | BARS-38, cb609, G3PDH, GAPD, KNC-NDS6, OCAS, p38 component |

Product Information

| | |
|----------------------|---|
| Calculated MW | 35 kDa |
| Observed MW | 35 kDa |
| Buffer | PBS with 0.05% Proclin300, 50% glycerol, pH7.3. |
| Purify | Antigen Affinity Purification |
| Dilution | WB 1:3000-1:6000 IHC 1:300-1:500 |

Background

Glyceraldehyde-3-phosphate dehydrogenase (GAPDH) catalyzes the phosphorylation of glyceraldehyde-3-phosphate during glycolysis. GAPDH participates in nuclear events including transcription, binding RNA, RNA transportation, DNA replication, DNA repair and apoptosis. Being stably and constitutively expressed at high levels in most tissues and cells, GAPDH is considered a housekeeping protein. It was widely used as a control for RT-PCR and also loading control in electrophoresis and Western blotting. GAPDH is normally expressed in cellular cytoplasm or membrane, but can occasionally translocate to the nucleus post modification such as S-nitrosylation.

For Research Use Only

Thank you for your recent purchase.
 If you would like to learn more about antibodies, please visit www.elabscience.com.

Focus on your research
Service for life science

Applications:WB-Western Blot IHC-Immunohistochemistry IF-Immunofluorescence IP-Immunoprecipitation FC-Flow cytometry ChIP-Chromatin Immunoprecipitation Reactivity: H-Human R-Rat M-Mouse Mk-Monkey Dg-Dog Ch-Chicken Hm-Hamster Rb-Rabbit Sh-Sheep Pg-Pig Z-Zebrafish X-Xenopus C-Cow.