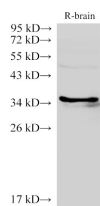


LDHC Polyclonal Antibody

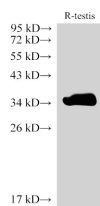
Catalog No.	E-AB-40359	Reactivity	H,M,R
Storage	Store at -20°C. Avoid freeze / thaw cycles.	Host	Rabbit
Applications	WB,IHC	Isotype	IgG

Note: Centrifuge before opening to ensure complete recovery of vial contents.

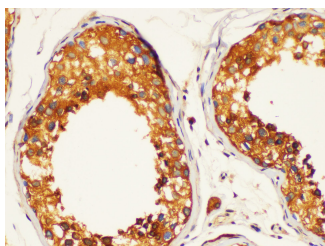
Images



Western Blot analysis of Rat brain using LDHC Polyclonal Antibody at dilution of 1:2000



Western Blot analysis of Rat testis using LDHC Polyclonal Antibody at dilution of 1:2000



Immunohistochemistry of paraffin-embedded Human testis using LDHC Polyclonal Antibody at dilution of 1:200

Immunogen Information

Immunogen	Recombinant Rat L-lactate dehydrogenase C chain protein
Swissprot	P19629
Synonyms	Cancer/testis antigen 32,LDH testis subunit, LDH X, MGC111073

Product Information

Calculated MW	35 kDa
Observed MW	35 kDa
Buffer	PBS with 0.05% Proclin300 and 50% glycerol, pH7.3.
Purify	Antigen Affinity Purification
Dilution	WB 1:1000-1:3000 IHC 1:100-1:300

Background

Lactate dehydrogenase C catalyzes the conversion of L-lactate and NAD to pyruvate and NADH in the final step of anaerobic glycolysis. LDHC is testis-specific and belongs to the lactate dehydrogenase family. Two transcript variants have been detected which differ in the 5' untranslated region.

For Research Use Only

Thank you for your recent purchase.
 If you would like to learn more about antibodies, please visit www.elabscience.com.

**Focus on your research
 Service for life science**

Applications:WB-Western Blot IHC-Immunohistochemistry IF-Immunofluorescence IP-Immunoprecipitation FC-Flow cytometry ChIP-Chromatin Immunoprecipitation Reactivity: H-Human R-Rat M-Mouse Mk-Monkey Dg-Dog Ch-Chicken Hm-Hamster Rb-Rabbit Sh-Sheep Pg-Pig Z-Zebrafish X-Xenopus C-Cow.