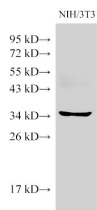


## BMI1 Polyclonal Antibody

<b>Catalog No.</b>	E-AB-40381	<b>Reactivity</b>	M
<b>Storage</b>	Store at -20°C. Avoid freeze / thaw cycles.	<b>Host</b>	Rabbit
<b>Applications</b>	WB	<b>Isotype</b>	IgG

**Note:** Centrifuge before opening to ensure complete recovery of vial contents.

### Images



Western Blot analysis of NIH/3T3 cells using BMI1 Polyclonal Antibody at dilution of 1:500.

### Immunogen Information

<b>Immunogen</b>	Recombinant Mouse Polycomb complex protein BMI-1 protein
<b>Swissprot</b>	P25916
<b>Synonyms</b>	Bmi 1,BMI1,PCGF 4,PCGF4,RNF 51,RNF51

### Product Information

<b>Calculated MW</b>	36 kDa
<b>Observed MW</b>	36 kDa
<b>Buffer</b>	PBS with 0.05% Proclin300, 50% glycerol, pH7.3.
<b>Purify</b>	Antigen Affinity Purification
<b>Dilution</b>	WB 1:500-1:1000

### Background

BMI- 1 is one of polycomb group genes,which together with Ring1 strongly enhances the E3 ubiquitin ligase activity of the Ring2 catalytic subunit. Bmi1 plays an important role in the regulation of cell proliferation and senescence through repression of the p16Ink4a and p19Arf genes and is required for maintenance of adult hematopoietic and neural stem cells. The antibody reacts with the 37kd BMI1 protein.

#### For Research Use Only

Thank you for your recent purchase.

If you would like to learn more about antibodies,please visit [www.elabscience.com](http://www.elabscience.com).

**Focus on your research  
Service for life science**

Applications:WB-Western Blot IHC-Immunohistochemistry IF-Immunofluorescence IP-Immunoprecipitation FC-Flow cytometry ChIP-Chromatin Immunoprecipitation Reactivity: H-Human R-Rat M-Mouse Mk-Monkey Dg-Dog Ch-Chicken Hm-Hamster Rb-Rabbit Sh-Sheep Pg-Pig Z-Zebrafish X-Xenopus C-Cow.