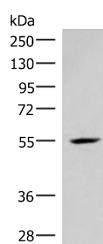


## IRX4 Polyclonal Antibody

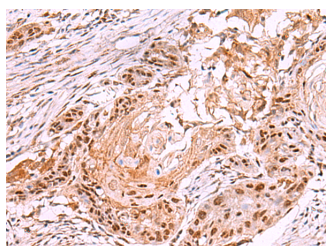
<b>Catalog No.</b>	E-AB-52042	<b>Reactivity</b>	H,M
<b>Storage</b>	Store at -20°C. Avoid freeze / thaw cycles.	<b>Host</b>	Rabbit
<b>Applications</b>	WB,IHC,ELISA	<b>Isotype</b>	IgG

**Note:** Centrifuge before opening to ensure complete recovery of vial contents.

### Images



Western blot analysis of Mouse heart tissue lysate using IRX4 Polyclonal Antibody at dilution of 1:400



Immunohistochemistry of paraffin-embedded Human esophagus cancer tissue using IRX4 Polyclonal Antibody at dilution of 1:35(x200)

### Immunogen Information

<b>Immunogen</b>	Synthetic peptide of human IRX4
<b>Gene Accession</b>	NP057442
<b>Swissprot</b>	P78413
<b>Synonyms</b>	Iroquois Homeobox Protein 4, Homeodomain Protein IRXA3, IRXA3

### Product Information

<b>Calculated MW</b>	54 kDa
<b>Observed MW</b>	Refer to figures
<b>Buffer</b>	PBS with 0.05% NaN <sub>3</sub> and 40% Glycerol, pH 7.4
<b>Purify</b>	Antigen affinity purification
<b>Dilution</b>	WB 1:500-1:2000, IHC 1:30-1:150, ELISA 1:5000-1:10000

### Background

IRX4 (Iroquois Homeobox 4) is a Protein Coding gene. Diseases associated with IRX4 include Tetralogy Of Fallot and Familial Atrial Fibrillation. Among its related pathways are Cardiac Progenitor Differentiation and Heart Development. Gene Ontology (GO) annotations related to this gene include sequence-specific DNA binding. An important paralog of this gene is IRX6.

#### For Research Use Only

Thank you for your recent purchase.  
 If you would like to learn more about antibodies, please visit [www.elabscience.com](http://www.elabscience.com).

**Focus on your research  
 Service for life science**

Applications: WB-Western Blot IHC-Immunohistochemistry IF-Immunofluorescence IP-Immunoprecipitation FC-Flow cytometry ChIP-Chromatin Immunoprecipitation Reactivity: H-Human R-Rat M-Mouse Mk-Monkey Dg-Dog Ch-Chicken Hm-Hamster Rb-Rabbit Sh-Sheep Pg-Pig Z-Zebrafish X-Xenopus C-Cow.