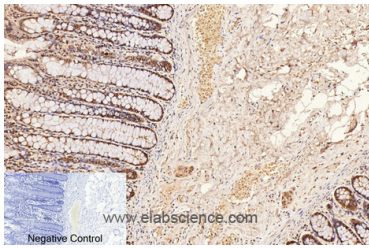


CD2 Monoclonal Antibody

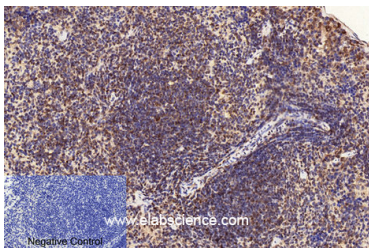
Catalog No.	E-AB-22097	Reactivity	H,M,R
Storage	Store at -20°C. Avoid freeze / thaw cycles.	Host	Mouse
Applications	IHC-p	Isotype	IgG

Note: Centrifuge before opening to ensure complete recovery of vial contents.

Images



Immunohistochemistry of paraffin-embedded Human colon tissue using CD2 Monoclonal Antibody at dilution of 1:200.



Immunohistochemistry of paraffin-embedded Mouse spleen tissue using CD2 Monoclonal Antibody at dilution of 1:200.

Immunogen Information

Immunogen	Synthetic Peptide
Swissprot	P06729
Synonyms	CD2,SRBC,T-cell surface antigen CD2,Erythrocyte receptor,LFA-2,LFA-3 receptor,Rosette receptor,T-cell surface antigen T11/Leu-5,CD2

Product Information

Buffer	PBS with 0.02% sodium azide and 50% glycerol pH 7.4.
Purify	Protein A purification
Clone No.	Clone:4C3
Dilution	IHC 1:50-200

Background

The protein encoded by this gene is a surface antigen found on all peripheral blood T-cells. The encoded protein interacts with LFA3 (CD58) on antigen presenting cells to optimize immune recognition. A locus control region (LCR) has been found in the 3' flanking sequence of this gene. CD2 (CD2 Molecule) is a Protein Coding gene. Diseases associated with CD2 include Penis Squamous Cell Carcinoma and Immune Defect Due To Absence Of Thymus. Among its related pathways are PEDF Induced Signaling and TGF-Beta Pathway. GO annotations related to this gene include protein homodimerization activity and receptor activity.

For Research Use Only

Thank you for your recent purchase.
 If you would like to learn more about antibodies, please visit www.elabscience.com.

**Focus on your research
 Service for life science**

Applications:WB-Western Blot IHC-Immunohistochemistry IF-Immunofluorescence IP-Immunoprecipitation FC-Flow cytometry ChIP-Chromatin Immunoprecipitation Reactivity: H-Human R-Rat M-Mouse Mk-Monkey Dg-Dog Ch-Chicken Hm-Hamster Rb-Rabbit Sh-Sheep Pg-Pig Z-Zebrafish X-Xenopus C-Cow.