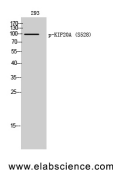


Phospho-KIF20A (Ser528) Polyclonal Antibody

Catalog No.	E-AB-21047	Reactivity	H
Storage	Store at -20°C. Avoid freeze / thaw cycles.	Host	Rabbit
Applications	WB,IHC-p,ELISA	Isotype	IgG

Note: Centrifuge before opening to ensure complete recovery of vial contents.

Images



Western Blot analysis of 293T cells with Phospho-KIF20A (Ser528) Polyclonal Antibody

Immunogen Information

Immunogen	Synthesized peptide derived from human KIF20A around the phosphorylation site of Ser528
Swissprot	O95235
Synonyms	KIF20A,MKLP2,RAB6KIFL,Kinesin-like protein KIF20A,GG10_2,Mitotic kinesin-like protein 2,MKlp2,Rab6-interacting kinesin-like protein,Rabkinesin-6

Product Information

Calculated MW	100kDa
Observed MW	100kDa
Buffer	PBS with 0.02% sodium azide, 0.5% BSA and 50% glycerol, pH7.4
Purify	Affinity purification
Dilution	WB 1:500-1:2000, IHC 1:100-1:300, ELISA 1:5000

Background

Mitotic kinesin required for chromosome passenger complex (CPC)-mediated cytokinesis. Following phosphorylation by PLK1, involved in recruitment of PLK1 to the central spindle. Interacts with guanosine triphosphate (GTP)-bound forms of RAB6A and RAB6B. May act as a motor required for the retrograde RAB6 regulated transport of Golgi membranes and associated vesicles along microtubules. Has a microtubule plus end-directed motility.

For Research Use Only

Thank you for your recent purchase.
 If you would like to learn more about antibodies, please visit www.elabscience.com.

**Focus on your research
 Service for life science**

Applications:WB-Western Blot IHC-Immunohistochemistry IF-Immunofluorescence IP-Immunoprecipitation FC-Flow cytometry ChIP-Chromatin Immunoprecipitation Reactivity: H-Human R-Rat M-Mouse Mk-Monkey Dg-Dog Ch-Chicken Hm-Hamster Rb-Rabbit Sh-Sheep Pg-Pig Z-Zebrafish X-Xenopus C-Cow.