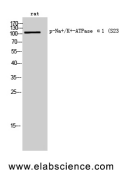


## Phospho-Na<sup>+</sup>/K<sup>+</sup>-ATPase alpha1 (Ser23) Polyclonal Antibody

<b>Catalog No.</b>	E-AB-21117	<b>Reactivity</b>	R
<b>Storage</b>	Store at -20°C. Avoid freeze / thaw cycles.	<b>Host</b>	Rabbit
<b>Applications</b>	WB,IF,ELISA	<b>Isotype</b>	IgG

**Note:** Centrifuge before opening to ensure complete recovery of vial contents.

### Images



Western Blot analysis of Rat cells with Phospho-Na<sup>+</sup>/K<sup>+</sup>-ATPase alpha1 (Ser23) Polyclonal Antibody

### Immunogen Information

<b>Immunogen</b>	Synthesized peptide derived from human Na <sup>+</sup> /K <sup>+</sup> -ATPase α1 around the phosphorylation site of Ser23
<b>Swissprot</b>	P05023
<b>Synonyms</b>	ATP1A1,Sodium/potassium-transporting ATPase subunit alpha-1,Na(+)/K(+) ATPase alpha-1 subunit,Sodium pump subunit alpha-1

### Product Information

<b>Calculated MW</b>	113kDa
<b>Observed MW</b>	113kDa
<b>Buffer</b>	PBS with 0.02% sodium azide, 0.5% BSA and 50% glycerol, pH7.4
<b>Purify</b>	Affinity purification
<b>Dilution</b>	WB 1:500-1:2000, IF 1:100-1:300, ELISA 1:5000

### Background

This is the catalytic component of the active enzyme, which catalyzes the hydrolysis of ATP coupled with the exchange of sodium and potassium ions across the plasma membrane. This action creates the electrochemical gradient of sodium and potassium ions, providing the energy for active transport of various nutrients.

#### For Research Use Only

Thank you for your recent purchase.  
 If you would like to learn more about antibodies, please visit [www.elabscience.com](http://www.elabscience.com).

**Focus on your research  
 Service for life science**

Applications:WB-Western Blot IHC-Immunohistochemistry IF-Immunofluorescence IP-Immunoprecipitation FC-Flow cytometry ChIP-Chromatin Immunoprecipitation Reactivity: H-Human R-Rat M-Mouse Mk-Monkey Dg-Dog Ch-Chicken Hm-Hamster Rb-Rabbit Sh-Sheep Pg-Pig Z-Zebrafish X-Xenopus C-Cow.