

## RAN Polyclonal Antibody

**Catalog No.** E-AB-40251

**Note:** Centrifuge before opening to ensure complete recovery of vial contents.

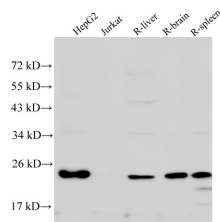
### Description

<b>Reactivity</b>	Human,Mouse,Rat
<b>Immunogen</b>	Recombinant Human GTP-binding nuclear protein Ran protein
<b>Host</b>	Rabbit
<b>Isotype</b>	IgG
<b>Purification</b>	Affinity Purification
<b>Conjugation</b>	Unconjugated
<b>Buffer</b>	PBS with 0.05% Proclin300 and 50% glycerol, pH7.4.

### Applications Recommended Dilution

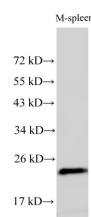
**WB** 1:500-1:1000

### Data



Western Blot analysis of HepG2, Jurkat cells, Rat liver, Rat brain and Rat spleen using RAN Polyclonal Antibody at dilution of 1:500

**Observed Mw:24 kDa**  
**Calculated Mw:24 kDa**



Western Blot analysis of Mouse spleen using RAN Polyclonal Antibody at dilution of 1:500

### Preparation & Storage

**Storage** Store at -20°C. Avoid freeze / thaw cycles.

### Background

RAN (ras-related nuclear protein) is a small GTP binding protein belonging to the RAS superfamily that is essential for the translocation of RNA and proteins through the nuclear pore complex. The RAN protein is also involved in control of DNA synthesis and cell cycle progression. Nuclear localization of RAN requires the presence of regulator of chromosome condensation 1 (RCC1). Mutations in RAN disrupt DNA synthesis.

### For Research Use Only