

LMNA Polyclonal Antibody

Catalog No. E-AB-40252

Note: Centrifuge before opening to ensure complete recovery of vial contents.

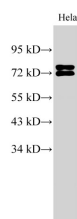
Description

Reactivity	Human
Immunogen	Recombinant Human Prelamin-A/C protein
Host	Rabbit
Isotype	IgG
Purification	Affinity Purification
Conjugation	Unconjugated
Buffer	PBS with 0.05% Proclin300 and 50% glycerol, pH7.4.

Applications Recommended Dilution

WB 1:500-1:1000

Data



Western Blot analysis of HeLa cell using LMNA Polyclonal Antibody at dilution of 1:500
Observed Mw:71,74 kDa
Calculated Mw:63,64,65,69,71,74 kDa

Preparation & Storage

Storage Store at -20°C. Avoid freeze / thaw cycles.

Background

The nuclear lamina consists of a two-dimensional matrix of proteins located next to the inner nuclear membrane. The lamin family of proteins make up the matrix and are highly conserved in evolution. During mitosis, the lamina matrix is reversibly disassembled as the lamin proteins are phosphorylated. Lamin proteins are thought to be involved in nuclear stability, chromatin structure and gene expression. Vertebrate lamins consist of two types, A and B. Alternative splicing results in multiple transcript variants.

For Research Use Only