

MCM3 Polyclonal Antibody

Catalog No. E-AB-40253

Note: Centrifuge before opening to ensure complete recovery of vial contents.

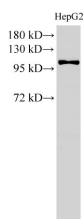
Description

Reactivity	Human
Immunogen	Recombinant Human DNA replication licensing factor MCM3 protein
Host	Rabbit
Isotype	IgG
Purification	Affinity Purification
Conjugation	Unconjugated
Buffer	PBS with 0.05% Proclin300 and 50% glycerol, pH7.4.

Applications Recommended Dilution

WB 1:500-1:1000

Data



Western Blot analysis of HepG2 cell using MCM3
Polyclonal Antibody at dilution of 1:500

Observed Mw:100 kDa

Calculated Mw:91,96 kDa

Preparation & Storage

Storage Store at -20°C. Avoid freeze / thaw cycles.

Background

The protein encoded by this gene is one of the highly conserved mini-chromosome maintenance proteins (MCM) that are involved in the initiation of eukaryotic genome replication. The hexameric protein complex formed by MCM proteins is a key component of the pre-replication complex (pre_RC) and may be involved in the formation of replication forks and in the recruitment of other DNA replication related proteins. This protein is a subunit of the protein complex that consists of MCM2-7. It has been shown to interact directly with mCM5/CDC46. This protein also interacts with and is acetylated by MCM3AP, a chromatin-associated acetyltransferase. The acetylation of this protein inhibits the initiation of DNA replication and cell cycle progression. Two transcript variants encoding different isoforms have been found for this gene.

For Research Use Only