

ANXA6 Polyclonal Antibody

Catalog No. E-AB-40260

Note: Centrifuge before opening to ensure complete recovery of vial contents.

Description

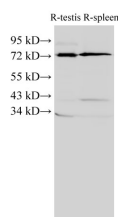
Reactivity	Human, Mouse, Rat
Immunogen	Recombinant Rat Annexin A6 protein
Host	Rabbit
Isotype	IgG
Purification	Affinity Purification
Conjugation	Unconjugated
Buffer	PBS with 0.02% sodium azide, 1% protective protein and 50% glycerol, pH7.4

Applications

Recommended Dilution

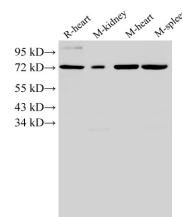
WB	1:1000-1:4000
IHC	1:100-1:200

Data

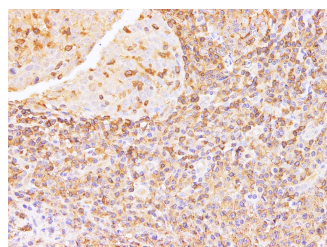


Western Blot analysis of Rat testis and Rat spleen using ANXA6 Polyclonal Antibody at dilution of 1:2000

Observed Mw:72 kDa
Calculated Mw:76 kDa



Western Blot analysis of Rat heart, Mouse kidney, Mouse heart and Mouse spleen using ANXA6 Polyclonal Antibody at dilution of 1:2000



Immunohistochemistry of paraffin-embedded Human tonsil using Anxa6 Polyclonal Antibody at dilution of 1:100

Preparation & Storage

For Research Use Only

Storage Store at -20°C. Avoid freeze / thaw cycles.

Background

Annexin VI belongs to a family of calcium-dependent membrane and phospholipid binding proteins. Several members of the annexin family have been implicated in membrane-related events along exocytotic and endocytotic pathways. The annexin VI gene is approximately 60 kbp long and contains 26 exons. It encodes a protein of about 68 kDa that consists of eight 68-amino acid repeats separated by linking sequences of variable lengths. It is highly similar to human annexins I and II sequences, each of which contain four such repeats. Annexin VI has been implicated in mediating the endosome aggregation and vesicle fusion in secreting epithelia during exocytosis. Alternatively spliced transcript variants have been described.