

HP1α Polyclonal Antibody

Catalog No. E-AB-40261

Note: Centrifuge before opening to ensure complete recovery of vial contents.

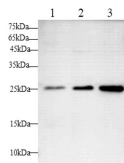
Description

Reactivity	Human,Rat
Immunogen	Recombinant Human Chromobox protein homolog 5 protein
Host	Rabbit
Isotype	IgG
Purification	Affinity Purification
Conjugation	Unconjugated
Buffer	PBS with 0.05% Proclin300 and 50% glycerol, pH7.4.

Applications Recommended Dilution

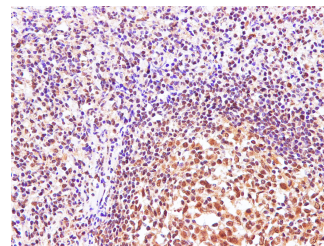
WB:1:500-1000 IHC
1:100-1:300

Data

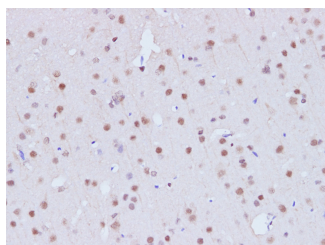


Western blot with Cbx5 Polyclonal antibody at dilution of 1:1000.lane 1:Hela whole cell lysate, lane 2:SH-SY5Y whole cell lysate,lane 3:MCF-7 whole cell lysate

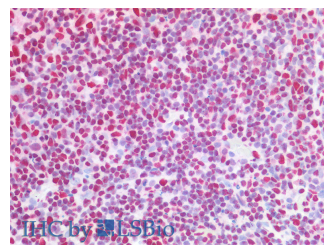
Observed Mw:25kDa
Calculated Mw:22kDa



Immunohistochemistry of paraffin-embedded Human tonsil using CBX5 Polyclonal Antibody at dilution of 1:100



Immunohistochemistry of paraffin-embedded Rat brain using CBX5 Polyclonal Antibody at dilution of 1:100



Immunohistochemistry of paraffin-embedded Human tonsil using CBX5 Polyclonal Antibody at dilution of 1:100(Elabscience® Product Detected by Lifespan).

For Research Use Only

Preparation & Storage

Storage Store at -20°C. Avoid freeze / thaw cycles.

Background

This gene encodes a highly conserved nonhistone protein, which is a member of the heterochromatin protein family. The protein is enriched in the heterochromatin and associated with centromeres. The protein has a single N-terminal chromodomain which can bind to histone proteins via methylated lysine residues, and a C-terminal chromo shadow-domain (CSD) which is responsible for the homodimerization and interaction with a number of chromatin-associated nonhistone proteins. The encoded product is involved in the formation of functional kinetochore through interaction with essential kinetochore proteins. The gene has a pseudogene located on chromosome 3. Multiple alternatively spliced variants, encoding the same protein, have been identified.

For Research Use Only