

Cytochrome c1 Polyclonal Antibody

Catalog No. E-AB-40271

Note: Centrifuge before opening to ensure complete recovery of vial contents.

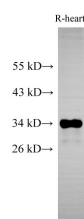
Description

Reactivity	Human,Mouse,Rat
Immunogen	Recombinant Mouse Cytochrome c1, heme protein, mitochondrial protein
Host	Rabbit
Isotype	IgG
Purification	Antigen Affinity Purification
Conjugation	Unconjugated
Buffer	PBS with 0.02% sodium azide, 1% protective protein and 50% glycerol, pH 7.4

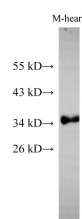
Applications Recommended Dilution

WB	1:500-1:1000
IHC	1:100-1:200

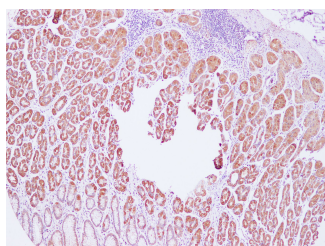
Data



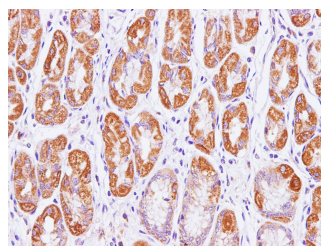
Western Blot analysis of Rat heart using Cytochrome c1 Polyclonal Antibody at dilution of 1:500
Observed Mw:34 kDa
Calculated Mw:35,29 kDa



Western Blot analysis of Mouse heart using Cytochrome c1 Polyclonal Antibody at dilution of 1:500



Immunohistochemistry of paraffin-embedded Human stomach using Cytochrome c1 Polyclonal Antibody at dilution of 1:100(100×)



Immunohistochemistry of paraffin-embedded Human stomach using Cytochrome c1 Polyclonal Antibody at dilution of 1:100(400×)

Preparation & Storage

Storage Store at -20°C. Avoid freeze / thaw cycles.

For Research Use Only

Background

This gene encodes a subunit of the cytochrome bc1 complex, which plays an important role in the mitochondrial respiratory chain by transferring electrons from the Rieske iron-sulfur protein to cytochrome c. Mutations in this gene may cause mitochondrial complex III deficiency, nuclear type 6.