

## POSTN Polyclonal Antibody

**Catalog No.** E-AB-40278

**Note:** Centrifuge before opening to ensure complete recovery of vial contents.

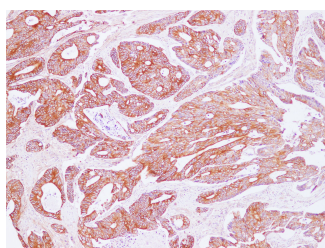
### Description

<b>Reactivity</b>	Human
<b>Immunogen</b>	Recombinant Human Periostin protein
<b>Host</b>	Rabbit
<b>Isotype</b>	IgG
<b>Purification</b>	Antigen Affinity Purification
<b>Conjugation</b>	Unconjugated
<b>Buffer</b>	PBS with 0.05% Proclin300 and 50% glycerol, pH7.4.

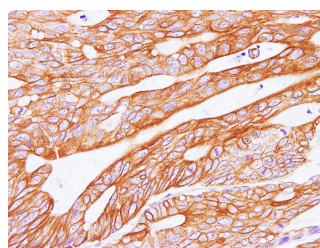
### Applications Recommended Dilution

**IHC 1:100-1:200 IF**  
**1:100-1:200**

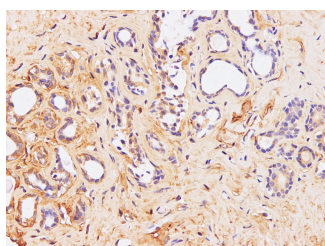
### Data



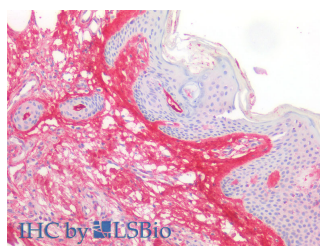
Immunohistochemistry of paraffin-embedded Human carcinoma of Colon using POSTN Polyclonal Antibody at dilution of 1:100(100x)



Immunohistochemistry of paraffin-embedded Human carcinoma of Colon using POSTN Polyclonal Antibody at dilution of 1:100(400x)

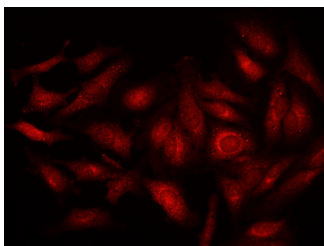


Immunohistochemistry of paraffin-embedded Human breast using POSTN Polyclonal Antibody at dilution of 1:100

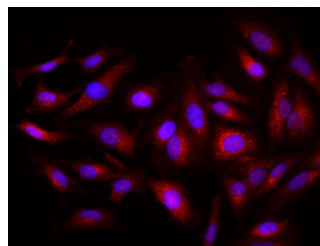


Immunohistochemistry of paraffin-embedded Human skin using POSTN Polyclonal Antibody at dilution of 1:80(Elabscience® Product Detected by Lifespan).

### For Research Use Only



Immunofluorescence analysis of HeLa cells using POSTN Polyclonal Antibody at dilution of 1:100



Immunofluorescence analysis of HeLa cells using POSTN Polyclonal Antibody at dilution of 1:100

## Preparation & Storage

**Storage** Store at -20°C. Avoid freeze / thaw cycles.

## Background

Periostin (POSTN,PN),originally named as osteoblast-specific factor 2 (OSF-2),is a 90-kDa secreted protein which is now classified as a matricellular protein. It is present in a wide variety of normal adult tissues and fetal tissues,and has a role in bone,tooth and heart development and function. Studies show that periostin is overexpressed in a broad range of human cancer types,includidng lung,ovary,breast and colon cancers. Recent evidence reveals that periostin is expressed by fibroblasts in the normal tissue and in the stroma of the primary tumour,and it is required to allow cancer stem cell maintenance.

## For Research Use Only