

CDK4 Polyclonal Antibody

Catalog No. E-AB-40286

Note: Centrifuge before opening to ensure complete recovery of vial contents.

Description

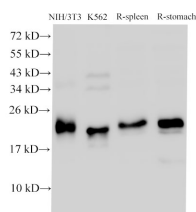
Reactivity	Human, Mouse, Rat
Immunogen	Recombinant Human Cyclin-dependent kinase 4 protein
Host	Rabbit
Isotype	IgG
Purification	Antigen Affinity Purification
Conjugation	Unconjugated
Buffer	PBS with 0.05% Proclin300 and 50% glycerol, pH7.4.

Applications Recommended Dilution

WB 1:1000-1:2000

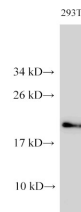
IHC 1:100-1:300

Data

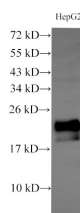


Western Blot analysis of NIH/3T3, K562 cells, Rat spleen and Rat stomach using CDK4 Polyclonal Antibody at dilution of 1:1000

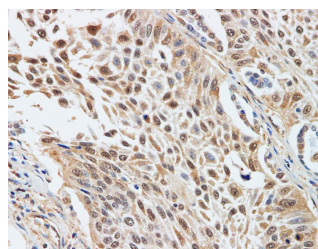
Observed Mw:21 kDa
Calculated Mw:34,21 kDa



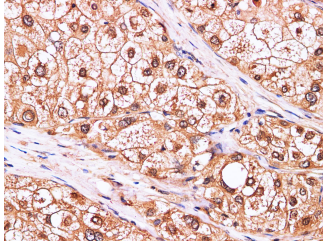
Western Blot analysis of 293T cells using CDK4 Polyclonal Antibody at dilution of 1:1000



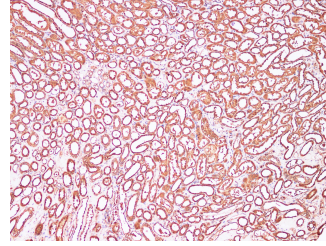
Western Blot analysis of HepG2 cells using CDK4 Polyclonal Antibody at dilution of 1:1000



Immunohistochemistry of paraffin-embedded Human lung cancer using CDK4 Polyclonal Antibody at dilution of 1:200



Immunohistochemistry of paraffin-embedded Human liver cancer using CDK4 Polyclonal Antibody at dilution of 1:100



Immunohistochemistry of paraffin-embedded Human kidney using CDK4 Polyclonal Antibody at dilution of 1:100

Preparation & Storage

Storage Store at -20°C. Avoid freeze / thaw cycles.

Background

The protein encoded by this gene is a member of the Ser/Thr protein kinase family. This protein is highly similar to the gene products of *S. cerevisiae cdc28* and *S. pombe cdc2*. It is a catalytic subunit of the protein kinase complex that is important for cell cycle G1 phase progression. The activity of this kinase is restricted to the G1-S phase, which is controlled by the regulatory subunits D-type cyclins and CDK inhibitor p16(INK4a). This kinase was shown to be responsible for the phosphorylation of retinoblastoma gene product (Rb). Mutations in this gene as well as in its related proteins including D-type cyclins, p16(INK4a) and Rb were all found to be associated with tumorigenesis of a variety of cancers. Multiple polyadenylation sites of this gene have been reported.

For Research Use Only