

PI 3 kinase p110 alpha Polyclonal Antibody

Catalog Number:E-AB-40287



Note: Centrifuge before opening to ensure complete recovery of vial contents.

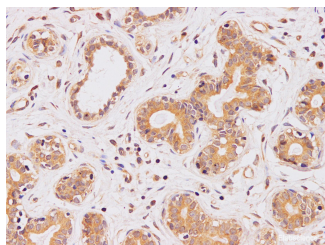
Description

Reactivity	Human,Rat
Immunogen	Recombinant Human Phosphatidylinositol 4,5-bisphosphate 3-kinase catalytic subunit alpha isoform protein
Host	Rabbit
Isotype	IgG
Purification	Affinity Purification
Conjugation	Unconjugated
Formulation	PBS with 0.05% Proclin300 and 50% glycerol, pH7.4.

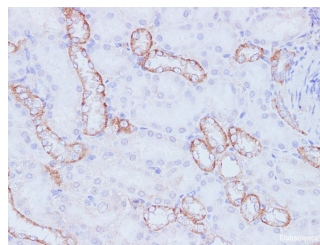
Applications Recommended Dilution

IHC	1:100-1:200
------------	-------------

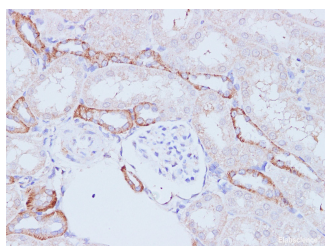
Data



Immunohistochemistry of paraffin-embedded Human breast using PI 3 kinase p110 alpha Polyclonal Antibody at dilution of 1:100



Immunohistochemistry of paraffin-embedded Rat kidney using PI 3 kinase p110 alpha Polyclonal Antibody at dilution of 1:100



Immunohistochemistry of paraffin-embedded Rat kidney using PI 3 kinase p110 alpha Polyclonal Antibody at dilution of 1:100

Preparation & Storage

Storage Store at -20°C. Avoid freeze / thaw cycles.

Background

Phosphatidylinositol 3-kinase is composed of an 85 kDa regulatory subunit and a 110 kDa catalytic subunit. The protein encoded by this gene represents the catalytic subunit, which uses ATP to phosphorylate PtdIns, PtdIns4P and PtdIns(4,5)P2. This gene has been found to be oncogenic and has been implicated in cervical cancers. A pseudogene of this gene has been defined on chromosome 22.

For Research Use Only

A Reliable Research Partner in Life Science and Medicine

Toll-free: 1-888-852-8623

Web: www.elabscience.com

Tel: 1-832-243-6086

Email: techsupport@elabscience.com

Fax: 1-832-243-6017