

Recombinant Human EphA4 Protein (aa 570-986, His & GST Tag)



Catalog Number:PKSH030369

Note: Centrifuge before opening to ensure complete recovery of vial contents.

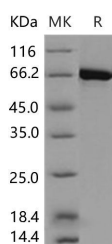
Description

Synonyms	Ephrin type-A receptor 4;HEK8;SEK;TYRO1;EPHA4;Tyrosine-protein kinase receptor SEK;Tyrosine-protein kinase TYRO1;EK8;hEK8;EPH-like kinase 8
Species	Human
Expression Host	Baculovirus-Insect Cells
Sequence	Ser 570-Val 986
Accession	P54764
Calculated Molecular Weight	75.0 kDa
Observed molecular weight	67 kDa
Tag	N-His-GST
Bioactivity	1. The specific activity was determined to be 17 nmol/min/mg using Poly(Glu:Tyr) 4:1 as substrate. 2. Immobilized human EPHA4 (aa 570-986)at 10 µg/ml (100 µl/well) can bind biotinylated human EphrinA5-His with a linear range of 0.625-5.0 µg/ml.

Properties

Purity	> 99 % as determined by reducing SDS-PAGE.
Endotoxin	< 1.0 EU per µg of the protein as determined by the LAL method.
Storage	Store at < -20°C, stable for 6 months. Please minimize freeze-thaw cycles.
Shipping	This product is provided as liquid. It is shipped at frozen temperature with blue ice/gel packs. Upon receipt, store it immediately at < - 20°C.
Formulation	Supplied as sterile solution of 20mM Tris, 500mM NaCl, pH 8.5, 10% glycerol, 3mM DTT
Reconstitution	Not Applicable

Data



> 99 % as determined by reducing SDS-PAGE.

Background

EPH receptor A4 (ephrin type-A receptor 4); also known as EphA4; belongs to the ephrin receptor subfamily of the protein-tyrosine kinase family which 16 known receptors (14 found in mammals) are involved: EPHA1; EPHA2; EPHA3; EPHA4; EPHA5; EPHA6; EPHA7; EPHA8; EPHA9; EPHA10; EPHB1; EPHB2; EPHB3; EPHB4; EPHB5; EPHB6. The Eph family of receptor tyrosine kinases (comprising EphA and EphB receptors) has been implicated in synapse formation and the regulation of synaptic function and plasticity⁶. EphA4 is enriched on dendritic spines of pyramidal neurons in the adult mouse hippocampus; and ephrin-A3 is localized on astrocytic processes that envelop spines. Eph receptor-mediated

For Research Use Only

A Reliable Research Partner in Life Science and Medicine

Toll-free: 1-888-852-8623

Web: www.elabscience.com

Tel: 1-832-243-6086

Email: techsupport@elabscience.com

Fax: 1-832-243-6017

Recombinant Human EphA4 Protein (aa 570-986, His & GST Tag)



Catalog Number:PKSH030369

signaling; which is triggered by ephrins7; probably modifies the properties of synapses during synaptic activation and remodeling. Ephrin receptors are components of cell signalling pathways involved in animal growth and development; forming the largest sub-family of receptor tyrosine kinases (RTKs). The extracellular domain of an EphA4 interacts with ephrin ligands; which may be tethered to neighbouring cells. Ligand-mediated activation of Ephs induce various important downstream effects and Eph receptors have been studied for their potential roles in the development of cancer.

For Research Use Only

A Reliable Research Partner in Life Science and Medicine

Toll-free: 1-888-852-8623

Web: www.elabscience.com

Tel: 1-832-243-6086

Email: techsupport@elabscience.com

Fax: 1-832-243-6017