

## Recombinant Human CDKL2 Protein (His Tag)

Catalog No. PKSH030371

**Note:** Centrifuge before opening to ensure complete recovery of vial contents.

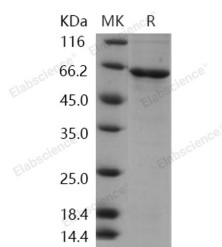
### Description

|                                    |                            |
|------------------------------------|----------------------------|
| <b>Synonyms</b>                    | KKIAMRE;P56                |
| <b>Species</b>                     | Human                      |
| <b>Expression Host</b>             | Baculovirus-Insect Cells   |
| <b>Sequence</b>                    | Met 1-His 493              |
| <b>Accession</b>                   | Q92772                     |
| <b>Calculated Molecular Weight</b> | 58.3 kDa                   |
| <b>Observed molecular weight</b>   | 63 kDa                     |
| <b>Tag</b>                         | N-His                      |
| <b>Bioactivity</b>                 | Not validated for activity |

### Properties

|                       |   |
|-----------------------|---|
| <b>Purity</b>         | > 80 % as determined by reducing SDS-PAGE.  |
| <b>Endotoxin</b>      | < 1.0 EU per µg of the protein as determined by the LAL method.   |
| <b>Storage</b>        | Store at < -20°C, stable for 6 months. Please minimize freeze-thaw cycles.  |
| <b>Shipping</b>       | This product is provided as liquid. It is shipped at frozen temperature with blue ice/gel packs. Upon receipt, store it immediately at < -20°C. |
| <b>Formulation</b>    | Supplied as sterile solution of 20mM Tris, 500mM NaCl, pH 7.4, 10% glycerol   |
| <b>Reconstitution</b> | Not Applicable  |

### Data



> 80 % as determined by reducing SDS-PAGE.

### Background

Cyclin-dependent kinase-like 2 (Cdkl2) is a member of cdc2-related serine / threonine protein kinase family and it is found expressed in various brain regions, including the cerebral cortex, entorinal cortex, hippocampus, amygdala, and dorsal thalamus. The high expression in these brain regions suggests that Cdkl2 may have functions in cognition and emotion processes. Cdkl2 accumulates primarily in the cytoplasm, with lower levels in the nucleus.

### For Research Use Only