

Recombinant Human ROR1 Protein (ECD, His Tag)

Catalog No. PKSH030440

Note: Centrifuge before opening to ensure complete recovery of vial contents.

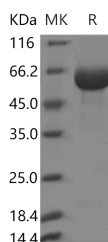
Description

Synonyms	dJ537F10.1;NTRKR1
Species	Human
Expression Host	HEK293 Cells
Sequence	Met 1-Glu403
Accession	NP_005003.2
Calculated Molecular Weight	43.4 kDa
Tag	C-His
Bioactivity	Not validated for activity

Properties

Purity	> 95 % as determined by reducing SDS-PAGE.
Endotoxin	< 1.0 EU per µg of the protein as determined by the LAL method.
Storage	Generally, lyophilized proteins are stable for up to 12 months when stored at -20 to -80°C. Reconstituted protein solution can be stored at 4-8°C for 2-7 days. Aliquots of reconstituted samples are stable at < -20°C for 3 months.
Shipping	This product is provided as lyophilized powder which is shipped with ice packs.
Formulation	Lyophilized from sterile PBS, pH 7.4 Normally 5 % - 8 % trehalose, mannitol and 0.01% Tween80 are added as protectants before lyophilization. Please refer to the specific buffer information in the printed manual.
Reconstitution	Please refer to the printed manual for detailed information.

Data



> 95 % as determined by reducing SDS-PAGE.

Background

Receptor tyrosine kinase-like orphan receptor 1 (ROR1), also known as neurotrophic tyrosine kinase, it is a member of the ROR family within receptor tyrosine kinases (RTK) superfamily. Human ROR1 is a type I transmembrane protein with 937 amino acids (aa) in length. It contains a 29 aa signal sequence, a 377 aa extracellular domain (ECD), a 21 aa

For Research Use Only

transmembrane segment, and a 510 aa cytoplasmic region. ROR1 expressed strongly in human heart, lung and kidney, but weakly in the CNS. At developmental stage, it expressed at high levels during early embryonic development. ROR1 has been shown to have very low kinase activity in vitro and is unlikely to function as a tyrosine kinase in vivo. It may act as a receptor for wnt ligand WNT5A which may result in the inhibition of WNT3A-mediated signaling.