

## Recombinant Human Statherin/STATH Protein (Fc Tag)

**Catalog No.** PKSH030572

**Note:** Centrifuge before opening to ensure complete recovery of vial contents.

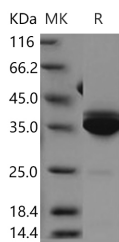
### Description

<b>Synonyms</b>	STATH;STR
<b>Species</b>	Human
<b>Expression Host</b>	HEK293 Cells
<b>Sequence</b>	Met 1-Phe62
<b>Accession</b>	P02808-1
<b>Calculated Molecular Weight</b>	31.6 kDa
<b>Observed molecular weight</b>	36 kDa
<b>Tag</b>	C-mFc
<b>Bioactivity</b>	Not validated for activity

### Properties

<b>Purity</b>	> 95 % as determined by reducing SDS-PAGE.
<b>Endotoxin</b>	< 1.0 EU per µg of the protein as determined by the LAL method.
<b>Storage</b>	Generally, lyophilized proteins are stable for up to 12 months when stored at -20 to -80°C. Reconstituted protein solution can be stored at 4-8°C for 2-7 days. Aliquots of reconstituted samples are stable at < -20°C for 3 months.
<b>Shipping</b>	This product is provided as lyophilized powder which is shipped with ice packs.
<b>Formulation</b>	Lyophilized from sterile PBS, pH 7.4 Normally 5 % - 8 % trehalose, mannitol and 0.01% Tween80 are added as protectants before lyophilization. Please refer to the specific buffer information in the printed manual.
<b>Reconstitution</b>	Please refer to the printed manual for detailed information.

### Data



> 95 % as determined by reducing SDS-PAGE.

### Background

Statherin, also known as STATH, belongs to the histatin/statherin family. Statherin may play an important role in the maintenance of oral health. It prevents calcium phosphate precipitation in saliva, so maintaining a high calcium level in

### For Research Use Only

saliva and preventing teeth from dissolving. Statherin also inhibits spontaneous precipitation of calcium phosphate salts. Thus, statherin and PRPs may prevent build-up of harmful deposits in the salivary glands and on the tooth surfaces. Statherin is a highly stable salivary protein of low molecular mass (5,380). Sabatini et al. synthesized mixed oligonucleotides based on the known amino acid sequence of statherin and used these to screen a cDNA library constructed from human parotid gland mRNA.

---

## For Research Use Only

Toll-free: 1-888-852-8623

Web: [www.elabscience.com](http://www.elabscience.com)

Tel: 1-832-243-6086

Email: [techsupport@elabscience.com](mailto:techsupport@elabscience.com)

Fax: 1-832-243-6017