

# Recombinant Human Galactolipase/PLRP2 Protein (His Tag)



Catalog Number:PKSH030573

**Note:** Centrifuge before opening to ensure complete recovery of vial contents.

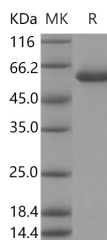
## Description

<b>Synonyms</b>	Pancreatic Lipase-Related Protein 2;PL-RP2;Galactolipase;PNLIPRP2;PLRP2
<b>Species</b>	Human
<b>Expression Host</b>	HEK293 Cells
<b>Sequence</b>	Met 1-Cys469
<b>Accession</b>	P54317
<b>Calculated Molecular Weight</b>	51.5 kDa
<b>Observed molecular weight</b>	57 kDa
<b>Tag</b>	C-His

## Properties

<b>Purity</b>	> 95 % as determined by reducing SDS-PAGE.
<b>Endotoxin</b>	< 1.0 EU per µg of the protein as determined by the LAL method.
<b>Storage</b>	Generally, lyophilized proteins are stable for up to 12 months when stored at -20 to -80°C. Reconstituted protein solution can be stored at 4-8°C for 2-7 days. Aliquots of reconstituted samples are stable at < -20°C for 3 months.
<b>Shipping</b>	This product is provided as lyophilized powder which is shipped with ice packs.
<b>Formulation</b>	Lyophilized from sterile 20mM Tris, 500mM NaCl, pH 7.4, 10% glycerol Normally 5 % - 8 % trehalose, mannitol and 0.01% Tween80 are added as protectants before lyophilization. Please refer to the specific buffer information in the printed manual.
<b>Reconstitution</b>	Please refer to the printed manual for detailed information.

## Data



> 95 % as determined by reducing SDS-PAGE.

## Background

Galactolipase; also known as PNLIPRP2; is a lipase with broad substrate specificity. It can hydrolyze both phospholipids and galactolipids. Galactolipase acts preferentially on monoglycerides; phospholipids and galactolipids. It also hydrolyses milk fat with a lower catalytic efficiency. The expressed galactolipase shows a lipolytic activity that is; however; only marginally dependent on the presence of colipase. The lipolytic activity of pancreatic extracts and human pancreatic juice on Labrasol is mainly due to the combined action of carboxyl ester hydrolase and galactolipase.

## For Research Use Only

A Reliable Research Partner in Life Science and Medicine

Toll-free: 1-888-852-8623

Web: [www.elabscience.com](http://www.elabscience.com)

Tel: 1-832-243-6086

Email: [techsupport@elabscience.com](mailto:techsupport@elabscience.com)

Fax: 1-832-243-6017