

Recombinant Human GNGT1/GNG1 Protein (His Tag)

Catalog Number:PKSH030582



Note: Centrifuge before opening to ensure complete recovery of vial contents.

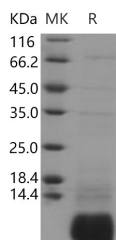
Description

Synonyms	GNG1
Species	Human
Expression Host	E.coli
Sequence	Pro 2-Cys 71
Accession	P63211
Calculated Molecular Weight	9.9 kDa
Observed molecular weight	9.0 kDa
Tag	N-His

Properties

Purity	> 90 % as determined by reducing SDS-PAGE.
Endotoxin	Please contact us for more information.
Storage	Generally, lyophilized proteins are stable for up to 12 months when stored at -20 to -80°C. Reconstituted protein solution can be stored at 4-8°C for 2-7 days. Aliquots of reconstituted samples are stable at < -20°C for 3 months.
Shipping	This product is provided as lyophilized powder which is shipped with ice packs.
Formulation	Lyophilized from sterile PBS, pH 7.5 Normally 5 % - 8 % trehalose, mannitol and 0.01 % Tween80 are added as protectants before lyophilization. Please refer to the specific buffer information in the printed manual.
Reconstitution	Please refer to the printed manual for detailed information.

Data



> 90 % as determined by reducing SDS-PAGE.

Background

GNGT1 is a subunit of of transducin. Heterotrimeric G proteins consist of alpha, beta, and gamma subunits. They are membrane bound GTPases that are linked to 7-TM receptors. They function as signal transducers for the 7-transmembrane-helix G protein-coupled receptors. They are involved as a modulator or transducer in various transmembrane signaling systems. G proteins are bound to GDP in the 'off' state. GNGT1 is the gamma subunit of transducin. Ligand-receptor binding results in detachment of the G protein, switching it to an 'on' state and permitting Galpha activation of second messenger signalling cascades. There are several types of Galpha proteins; in addition, some Gbetagamma subunits have active functions. Gbetagamma coupled to H1 receptors can activate PLA2 and Gbetagamma coupled to M1 receptors can activate KIR channels. The beta and gamma chains are required for the GTPase activity, for

For Research Use Only

A Reliable Research Partner in Life Science and Medicine

Toll-free: 1-888-852-8623

Web: www.elabscience.com

Tel: 1-832-243-6086

Email: techsupport@elabscience.com

Fax: 1-832-243-6017

Recombinant Human GNGT1/GNG1 Protein (His Tag)

Catalog Number:PKSH030582



replacement of GDP by GTP, and for G protein-effector interaction.

For Research Use Only

A Reliable Research Partner in Life Science and Medicine

Toll-free: 1-888-852-8623

Tel: 1-832-243-6086

Fax: 1-832-243-6017

Web: www.elabscience.com

Email: techsupport@elabscience.com