

Recombinant Human PTH2/PTRH2 Protein (His Tag)

Catalog Number:PKSH030587



Note: Centrifuge before opening to ensure complete recovery of vial contents.

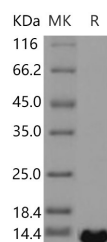
Description

Synonyms	BIT1;CFAP37;CGI-147;IMNEPD;PTH;PTH 2;PTH2;PTRH2
Species	Human
Expression Host	E.coli
Sequence	Gly63-Tyr179
Accession	Q9Y3E5
Calculated Molecular Weight	14.5 kDa
Observed molecular weight	14 kDa
Tag	N-His

Properties

Purity	> 95 % as determined by reducing SDS-PAGE.
Endotoxin	Please contact us for more information.
Storage	Generally, lyophilized proteins are stable for up to 12 months when stored at -20 to -80°C. Reconstituted protein solution can be stored at 4-8°C for 2-7 days. Aliquots of reconstituted samples are stable at < -20°C for 3 months.
Shipping	This product is provided as lyophilized powder which is shipped with ice packs.
Formulation	Lyophilized from sterile 20mM Tris, 10% glycerol, pH 8.0 Normally 5 % - 8 % trehalose, mannitol and 0.01% Tween80 are added as protectants before lyophilization. Please refer to the specific buffer information in the printed manual.
Reconstitution	Please refer to the printed manual for detailed information.

Data



> 95 % as determined by reducing SDS-PAGE.

Background

PTH2, also known as PTRH2, is a mitochondrial protein which belongs to the PTH2 family. PTH 2 is released during apoptosis from the mitochondria to the cytoplasm. The natural substrate for PTH 2 may be peptidyl-tRNAs which drop off the ribosome during protein synthesis. When in the cytoplasm, PTRH2 regulates the function of 2 transcriptional regulators, TLE5 and TLE1, thus promoting caspase-independent cell death.

For Research Use Only

A Reliable Research Partner in Life Science and Medicine

Toll-free: 1-888-852-8623

Web: www.elabscience.com

Tel: 1-832-243-6086

Email: techsupport@elabscience.com

Fax: 1-832-243-6017