

Recombinant Human AMY2A/Alpha-amylase Protein (His Tag)

Catalog No. PKSH030667

Note: Centrifuge before opening to ensure complete recovery of vial contents.

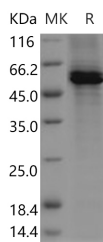
Description

Synonyms	AMY2;AMY2A;PA
Species	Human
Expression Host	HEK293 Cells
Sequence	Met 1-Leu511
Accession	P04746
Calculated Molecular Weight	57.3 kDa
Observed molecular weight	53-58 kDa
Tag	C-His
Bioactivity	Not validated for activity

Properties

Purity	> 85 % as determined by reducing SDS-PAGE.
Endotoxin	< 1.0 EU per µg of the protein as determined by the LAL method.
Storage	Generally, lyophilized proteins are stable for up to 12 months when stored at -20 to -80°C. Reconstituted protein solution can be stored at 4-8°C for 2-7 days. Aliquots of reconstituted samples are stable at < -20°C for 3 months.
Shipping	This product is provided as lyophilized powder which is shipped with ice packs.
Formulation	Lyophilized from sterile PBS, pH 7.4 Normally 5 % - 8 % trehalose, mannitol and 0.01% Tween80 are added as protectants before lyophilization. Please refer to the specific buffer information in the printed manual.
Reconstitution	Please refer to the printed manual for detailed information.

Data



> 85 % as determined by reducing SDS-PAGE.

Background

Alpha-amylase is the major form of amylase found in humans and other mammals. Amylases are secreted proteins that hydrolyze 1,4-alpha-glucoside bonds in oligosaccharides and polysaccharides, and thus catalyze the first step in digestion

For Research Use Only

of dietary starch and glycogen. Alpha-amylase hydrolyses alpha bonds of large, alpha-linked polysaccharides, such as starch and glycogen, yielding glucose and maltose. Amylases is widely expressed and is most prominent in pancreatic juice and saliva, each of which has its own isoform of human α -amylase. They behave differently on isoelectric focusing, and can also be separated in testing by using specific monoclonal antibodies.