

Recombinant Human UBE2M/UBC12 Protein

Catalog Number:PKSH030703



Note: Centrifuge before opening to ensure complete recovery of vial contents.

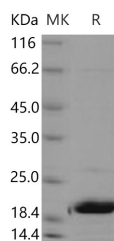
Description

Synonyms	NEDD8-conjugating enzyme Ubc12;NEDD8 carrier protein;NEDD8 protein ligase;Ubiquitin-conjugating enzyme E2 M;UBC12;UBE2M;
Species	Human
Expression Host	E.coli
Sequence	Met 1-Lys 183
Accession	P61081
Calculated Molecular Weight	21 kDa
Observed molecular weight	20 kDa
Tag	None

Properties

Purity	> 90 % as determined by reducing SDS-PAGE.
Endotoxin	Please contact us for more information.
Storage	Generally, lyophilized proteins are stable for up to 12 months when stored at -20 to -80°C. Reconstituted protein solution can be stored at 4-8°C for 2-7 days. Aliquots of reconstituted samples are stable at < -20°C for 3 months.
Shipping	This product is provided as lyophilized powder which is shipped with ice packs.
Formulation	Lyophilized from sterile PBS, 10% glycerol, 1mM DTT, pH 8.0 Normally 5 % - 8 % trehalose, mannitol and 0.01% Tween80 are added as protectants before lyophilization. Please refer to the specific buffer information in the printed manual.
Reconstitution	Please refer to the printed manual for detailed information.

Data



> 90 % as determined by reducing SDS-PAGE.

Background

UBE2M is a member of the ubiquitin-conjugating E2 family whose members perform the second step in the ubiquitination reaction. Initially identified as the main process for protein degradation; ubiquitination is believed nowadays to be crucial for a wider range of cellular processes. The outcome of the ubiquitin-conjugation reaction; and thereby the fate of the substrate; is heavily dependent on the number of ubiquitin molecules attached and how these ubiquitin molecules are inter-connected. To deal with this complexity and to allow adequate ubiquitination in time and space; a highly sophisticated conjugation machinery has been developed. In a sequential manner; ubiquitin becomes activated by an ubiquitin-activating enzyme (E1); which then transfers the ubiquitin to a group of ubiquitin-conjugating

For Research Use Only

A Reliable Research Partner in Life Science and Medicine

Toll-free: 1-888-852-8623

Web: www.elabscience.com

Tel: 1-832-243-6086

Email: techsupport@elabscience.com

Fax: 1-832-243-6017

Recombinant Human UBE2M/UBC12 Protein

Catalog Number:PKSH030703



enzymes (E2s). Next; ubiquitin-loaded E2s are interacting with ubiquitin protein ligases (E3s) and ubiquitin is conjugated to substrates on recruitment by the E3. These three key enzymes are operating in a hierarchical system; wherein two E1s and 35 E2s have been found and hundreds of E3s have been identified in humans.

For Research Use Only

A Reliable Research Partner in Life Science and Medicine

Toll-free: 1-888-852-8623

Tel: 1-832-243-6086

Fax: 1-832-243-6017

Web: www.elabscience.com

Email: techsupport@elabscience.com