

Recombinant Human SELP/selectin P/P-selectin Protein (Fc Tag)



Catalog Number:PKSH030759

Note: Centrifuge before opening to ensure complete recovery of vial contents.

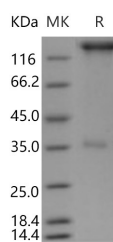
Description

Synonyms	CD62;CD62P;GMP140;GRMP;LECAM3;P-Selectin;PADGEM;PSEL
Species	Human
Expression Host	HEK293 Cells
Sequence	Met 1-Ala 771
Accession	AAN06828.1
Calculated Molecular Weight	107 kDa
Observed molecular weight	130-150 kDa
Tag	C-hFc
Bioactivity	Measured by the ability of the immobilized protein to support the adhesion of U937 human histiocytic lymphoma cells. When 5×10^4 cells/well are added to SELP/Fc Chimera coated plates (10 $\mu\text{g/mL}$ with 100 $\mu\text{L/well}$), > 80% cells will adhere after 1 hour at 37°C.

Properties

Purity	> 85 % as determined by reducing SDS-PAGE.
Endotoxin	< 1.0 EU per μg of the protein as determined by the LAL method.
Storage	Generally, lyophilized proteins are stable for up to 12 months when stored at -20 to -80°C. Reconstituted protein solution can be stored at 4-8°C for 2-7 days. Aliquots of reconstituted samples are stable at < -20°C for 3 months.
Shipping	This product is provided as lyophilized powder which is shipped with ice packs.
Formulation	Lyophilized from sterile PBS, pH 7.4 Normally 5 % - 8 % trehalose, mannitol and 0.01 % Tween80 are added as protectants before lyophilization. Please refer to the specific buffer information in the printed manual.
Reconstitution	Please refer to the printed manual for detailed information.

Data



> 85 % as determined by reducing SDS-PAGE.

Background

P selectin (SELP) is a 140kDa protein that is stored in the alpha-granules of platelets and Weibel-Palade bodies of endothelial cells. SELP mediates rapid rolling of leukocyte rolling over vascular surfaces during the initial steps in inflammation through interaction with PSGL1. P selectin is a cell adhesion molecule on the surface of activated endothelial cells. Cellular adhesion molecules are a large family of proteins that attach the cytoskeleton and intracellular

For Research Use Only

A Reliable Research Partner in Life Science and Medicine

Toll-free: 1-888-852-8623

Web: www.elabscience.com

Tel: 1-832-243-6086

Email: techsupport@elabscience.com

Fax: 1-832-243-6017

Recombinant Human SELP/selectin P/P-selectin Protein (Fc Tag)



Catalog Number:PKSH030759

signaling cascades with the extracellular environment. SELP is a calcium-dependent receptor for myeloid cells that binds to sialylated forms of Lewis blood group carbohydrate antigens on neutrophils and monocytes. This protein redistributes to the plasma membrane during platelet activation and degranulation and mediates the interaction of activated endothelial cells or platelets with leukocytes.

For Research Use Only

A Reliable Research Partner in Life Science and Medicine

Toll-free: 1-888-852-8623

Web: www.elabscience.com

Tel: 1-832-243-6086

Email: techsupport@elabscience.com

Fax: 1-832-243-6017