

# Recombinant Human SELP/selectin P/P-selectin Protein (Fc Tag)



Catalog Number:PKSH030759

**Note:** Centrifuge before opening to ensure complete recovery of vial contents.

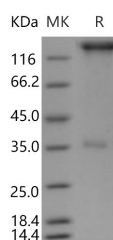
## Description

<b>Synonyms</b>	CD62;CD62P;GMP140;GRMP;LECAM3;P-Selectin;PADGEM;PSEL
<b>Species</b>	Human
<b>Expression Host</b>	HEK293 Cells
<b>Sequence</b>	Met 1-Ala 771
<b>Accession</b>	AAN06828.1
<b>Calculated Molecular Weight</b>	107 kDa
<b>Observed molecular weight</b>	130-150 kDa
<b>Tag</b>	C-hFc
<b>Bioactivity</b>	Measured by the ability of the immobilized protein to support the adhesion of U937 human histiocytic lymphoma cells. When $5 \times 10^4$ cells/well are added to SELP/Fc Chimera coated plates (10 $\mu\text{g/mL}$ with 100 $\mu\text{L/well}$ ), > 80% cells will adhere after 1 hour at 37°C.

## Properties

<b>Purity</b>	> 85 % as determined by reducing SDS-PAGE.
<b>Endotoxin</b>	< 1.0 EU per $\mu\text{g}$ of the protein as determined by the LAL method.
<b>Storage</b>	Generally, lyophilized proteins are stable for up to 12 months when stored at -20 to -80°C. Reconstituted protein solution can be stored at 4-8°C for 2-7 days. Aliquots of reconstituted samples are stable at < -20°C for 3 months.
<b>Shipping</b>	This product is provided as lyophilized powder which is shipped with ice packs.
<b>Formulation</b>	Lyophilized from sterile PBS, pH 7.4 Normally 5 % - 8 % trehalose, mannitol and 0.01 % Tween80 are added as protectants before lyophilization. Please refer to the specific buffer information in the printed manual.
<b>Reconstitution</b>	Please refer to the printed manual for detailed information.

## Data



> 85 % as determined by reducing SDS-PAGE.

## Background

P selectin (SELP) is a 140kDa protein that is stored in the alpha-granules of platelets and Weibel-Palade bodies of endothelial cells. SELP mediates rapid rolling of leukocyte rolling over vascular surfaces during the initial steps in inflammation through interaction with PSGL1. P selectin is a cell adhesion molecule on the surface of activated endothelial cells. Cellular adhesion molecules are a large family of proteins that attach the cytoskeleton and intracellular

## For Research Use Only

A Reliable Research Partner in Life Science and Medicine

Toll-free: 1-888-852-8623

Web: [www.elabscience.com](http://www.elabscience.com)

Tel: 1-832-243-6086

Email: [techsupport@elabscience.com](mailto:techsupport@elabscience.com)

Fax: 1-832-243-6017

# Recombinant Human SELP/selectin P/P-selectin Protein (Fc Tag)



Catalog Number:PKSH030759

---

signaling cascades with the extracellular environment. SELP is a calcium-dependent receptor for myeloid cells that binds to sialylated forms of Lewis blood group carbohydrate antigens on neutrophils and monocytes. This protein redistributes to the plasma membrane during platelet activation and degranulation and mediates the interaction of activated endothelial cells or platelets with leukocytes.

---

## For Research Use Only

A Reliable Research Partner in Life Science and Medicine

Toll-free: 1-888-852-8623

Web: [www.elabscience.com](http://www.elabscience.com)

Tel: 1-832-243-6086

Email: [techsupport@elabscience.com](mailto:techsupport@elabscience.com)

Fax: 1-832-243-6017