

Recombinant Human SERPINB1/PI2 Protein (Baculovirus, His Tag)



Catalog Number:PKSH030808

Note: Centrifuge before opening to ensure complete recovery of vial contents.

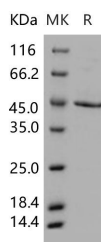
Description

Synonyms	Leukocyte elastase inhibitor;SERPINB1;Monocyte/neutrophil elastase inhibitor;M/NEI;Peptidase inhibitor 2;PI-2;PI2;EI;ELANH2;HEL-S-27;HEL57;LEI;MNEI;
Species	Human
Expression Host	Baculovirus-Insect Cells
Sequence	Met 1-Pro 379
Accession	P30740
Calculated Molecular Weight	44.0 kDa
Observed molecular weight	44 kDa
Tag	C-His

Properties

Purity	> 90 % as determined by reducing SDS-PAGE.
Endotoxin	< 1.0 EU per µg of the protein as determined by the LAL method.
Storage	Generally, lyophilized proteins are stable for up to 12 months when stored at -20 to -80°C. Reconstituted protein solution can be stored at 4-8°C for 2-7 days. Aliquots of reconstituted samples are stable at < -20°C for 3 months.
Shipping	This product is provided as lyophilized powder which is shipped with ice packs.
Formulation	Lyophilized from sterile 20mM Tris, 500mM NaCl, pH 8.0, 10% glycerol Normally 5 % - 8 % trehalose, mannitol and 0.01% Tween80 are added as protectants before lyophilization. Please refer to the specific buffer information in the printed manual.
Reconstitution	Please refer to the printed manual for detailed information.

Data



> 90 % as determined by reducing SDS-PAGE.

Background

SerpinB1 is an endogenous inhibitor of serine proteases recognized for its anti-inflammatory and host-protective properties. Serum SerpinB1 levels are elevated in patients with type 2 diabetes compared with that in healthy subjects and are negatively correlated with serum LDL-C. serpinB1 as an endogenous protein that can potentially be harnessed to enhance functional beta cell mass in patients with diabetes.

For Research Use Only

A Reliable Research Partner in Life Science and Medicine

Toll-free: 1-888-852-8623

Web: www.elabscience.com

Tel: 1-832-243-6086

Email: techsupport@elabscience.com

Fax: 1-832-243-6017