

Recombinant Human CD300a/LMIR1 Protein (Fc Tag)

Catalog No. PKSH030836

Note: Centrifuge before opening to ensure complete recovery of vial contents.

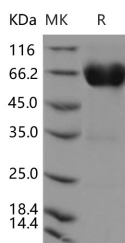
Description

Synonyms	CMRF35-Like Molecule 8;CLM-8;CD300 Antigen-Like Family Member A;CMRF-35-H9;CMRF35-H9;CMRF35-H;IRC1/IRC2;Immunoglobulin Superfamily Member 12;IgSF12;Inhibitory Receptor Protein 60;IRp60;NK Inhibitory Receptor;CD300a;CD300A;CMRF35H;IGSF12
Species	Human
Expression Host	HEK293 Cells
Sequence	Met 1-Gln178
Accession	Q9UGN4-1
Calculated Molecular Weight	44.5 kDa
Observed molecular weight	58-66 kDa
Tag	C-hFc
Bioactivity	Not validated for activity

Properties

Purity	> 95 % as determined by reducing SDS-PAGE.
Endotoxin	< 1.0 EU per µg of the protein as determined by the LAL method.
Storage	Generally, lyophilized proteins are stable for up to 12 months when stored at -20 to -80°C. Reconstituted protein solution can be stored at 4-8°C for 2-7 days. Aliquots of reconstituted samples are stable at < -20°C for 3 months.
Shipping	This product is provided as lyophilized powder which is shipped with ice packs.
Formulation	Lyophilized from sterile PBS, pH 7.4 Normally 5 % - 8 % trehalose, mannitol and 0.01% Tween80 are added as protectants before lyophilization. Please refer to the specific buffer information in the printed manual.
Reconstitution	Please refer to the printed manual for detailed information.

Data



> 95 % as determined by reducing SDS-PAGE.

For Research Use Only

Background

CMRF35-like molecule 8; also known as CD300 antigen-like family member A; CMRF35-H9; Immunoglobulin superfamily member 12; Inhibitory receptor protein 60; NK inhibitory receptor; CD300a and CMRF35H; is a single-pass type I membrane protein which belongs to the CD300 family. The CD300 family of myeloid immunoglobulin receptors includes activating (CD300b; CD300e) and inhibitory members (CD300a; CD300f); as well as molecules presenting a negative charge within their transmembrane domain (CD300c; CD300d). CD300A / IGSF12 is expressed not only by natural killer (NK) cells but also by T-cell subsets; B-cells; dendritic cells; mast cells; granulocytes and monocytes. It contains one Ig-like V-type (immunoglobulin-like) domain. CD300A / IGSF12 is an inhibitory receptor which may contribute to the down-regulation of cytolytic activity in natural killer (NK) cells; and to the down-regulation of mast cell degranulation. CD300c is a functional immune receptor able to deliver activating signals upon ligation in RBL-2H3 mast cells. CD300c signaling is partially mediated by a direct association with the immune receptor tyrosine-based activation motif-bearing adaptor FcεRγ. CD300a and CD300c play an important role in the cross-regulation of TNF-alpha and IFN-alpha secretion from plasmacytoid dendritic cells (pDCs).