

# Recombinant Human CD300a/LMIR1 Protein (Fc Tag)

Catalog Number:PKSH030836



**Note:** Centrifuge before opening to ensure complete recovery of vial contents.

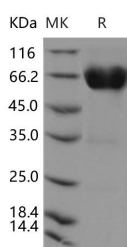
## Description

<b>Synonyms</b>	CMRF35-Like Molecule 8;CLM-8;CD300 Antigen-Like Family Member A;CMRF-35-H9;CMRF35-H9;CMRF35-H;IRC1/IRC2;Immunoglobulin Superfamily Member 12;IGSF12;Inhibitory Receptor Protein 60;IRp60;NK Inhibitory Receptor;CD300a;CD300A;CMRF35H;IGSF12
<b>Species</b>	Human
<b>Expression Host</b>	HEK293 Cells
<b>Sequence</b>	Met 1-Gln178
<b>Accession</b>	Q9UGN4-1
<b>Calculated Molecular Weight</b>	44.5 kDa
<b>Observed molecular weight</b>	58-66 kDa
<b>Tag</b>	C-hFc

## Properties

<b>Purity</b>	> 95 % as determined by reducing SDS-PAGE.
<b>Endotoxin</b>	< 1.0 EU per µg of the protein as determined by the LAL method.
<b>Storage</b>	Generally, lyophilized proteins are stable for up to 12 months when stored at -20 to -80°C. Reconstituted protein solution can be stored at 4-8°C for 2-7 days. Aliquots of reconstituted samples are stable at < -20°C for 3 months.
<b>Shipping</b>	This product is provided as lyophilized powder which is shipped with ice packs.
<b>Formulation</b>	Lyophilized from sterile PBS, pH 7.4 Normally 5 % - 8 % trehalose, mannitol and 0.01% Tween80 are added as protectants before lyophilization. Please refer to the specific buffer information in the printed manual.
<b>Reconstitution</b>	Please refer to the printed manual for detailed information.

## Data



> 95 % as determined by reducing SDS-PAGE.

## Background

CMRF35-like molecule 8; also known as CD300 antigen-like family member A; CMRF35-H9; Immunoglobulin superfamily member 12; Inhibitory receptor protein 60; NK inhibitory receptor; CD300a and CMRF35H; is a single-pass type I membrane protein which belongs to the CD300 family. The CD300 family of myeloid immunoglobulin receptors includes activating ( CD300b; CD300e ) and inhibitory members ( CD300a; CD300f ); as well as molecules presenting a negative charge within their transmembrane domain ( CD300c; CD300d ). CD300A / IGSF12 is expressed not only by

## For Research Use Only

A Reliable Research Partner in Life Science and Medicine

Toll-free: 1-888-852-8623

Web: [www.elabscience.com](http://www.elabscience.com)

Tel: 1-832-243-6086

Email: [techsupport@elabscience.com](mailto:techsupport@elabscience.com)

Fax: 1-832-243-6017

# Recombinant Human CD300a/LMIR1 Protein (Fc Tag)

Catalog Number:PKSH030836



natural killer (NK) cells but also by T-cell subsets; B-cells; dendritic cells; mast cells; granulocytes and monocytes. It contains one Ig-like V-type (immunoglobulin-like) domain. CD300A / IGSF12 is an inhibitory receptor which may contribute to the down-regulation of cytolytic activity in natural killer (NK) cells; and to the down-regulation of mast cell degranulation. CD300c is a functional immune receptor able to deliver activating signals upon ligation in RBL-2H3 mast cells. CD300c signaling is partially mediated by a direct association with the immune receptor tyrosine-based activation motif-bearing adaptor FcεRγ. CD300a and CD300c play an important role in the cross-regulation of TNF-alpha and IFN-alpha secretion from plasmacytoid dendritic cells (pDCs).

---

## For Research Use Only

A Reliable Research Partner in Life Science and Medicine

Toll-free: 1-888-852-8623

Tel: 1-832-243-6086

Fax: 1-832-243-6017

Web: [www.elabscience.com](http://www.elabscience.com)

Email: [techsupport@elabscience.com](mailto:techsupport@elabscience.com)