

Recombinant Human RhoA Protein (His Tag)

Catalog Number:PKSH030838



Note: Centrifuge before opening to ensure complete recovery of vial contents.

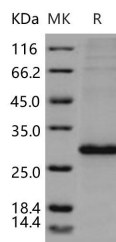
Description

| | |
|------------------------------------|--------------------------|
| Synonyms | ARH12;ARHA;RHO12;RHOH12 |
| Species | Human |
| Expression Host | Baculovirus-Insect Cells |
| Sequence | Met 1-Leu 193 |
| Accession | P61586-1 |
| Calculated Molecular Weight | 24 kDa |
| Observed molecular weight | 28 kDa |
| Tag | N-His |

Properties

| | |
|-----------------------|--|
| Purity | > 90 % as determined by reducing SDS-PAGE. |
| Endotoxin | < 1.0 EU per µg of the protein as determined by the LAL method. |
| Storage | Generally, lyophilized proteins are stable for up to 12 months when stored at -20 to -80°C. Reconstituted protein solution can be stored at 4-8°C for 2-7 days. Aliquots of reconstituted samples are stable at < -20°C for 3 months. |
| Shipping | This product is provided as lyophilized powder which is shipped with ice packs. |
| Formulation | Lyophilized from sterile 20mM Tris, 500mM NaCl, pH 7.4, 10% glycerol Normally 5 % - 8 % trehalose, mannitol and 0.01% Tween80 are added as protectants before lyophilization. Please refer to the specific buffer information in the printed manual. |
| Reconstitution | Please refer to the printed manual for detailed information. |

Data



> 90 % as determined by reducing SDS-PAGE.

Background

Transforming protein RhoA, also known as Rho cDNA clone 12, Ras homolog gene family member A, RHOA and ARH12, is a cell membrane and cytoplasm protein which belongs to the small GTPase superfamily and Rho family. The Rho family of small GTPases plays a key role in the dynamic regulation of the actin cytoskeleton that underlies various important cellular functions such as shape changes, migration, and polarity. RHOA / ARH12 is part of a larger family of related proteins known as the Ras superfamily; proteins involved in the regulation and timing of cell division. RHOA / ARH12 is a small GTPase protein known to regulate the actin cytoskeleton in the formation of stress fibers. It acts upon two known effector proteins: ROCK1 (Rho-associated, coiled-coil containing protein kinase 1) and DIAPH1 (diaphanous homolog 1 (Drosophila)). RHOA / ARH12 regulates a signal transduction pathway linking plasma membrane receptors to

For Research Use Only

A Reliable Research Partner in Life Science and Medicine

Toll-free: 1-888-852-8623

Web: www.elabscience.com

Tel: 1-832-243-6086

Email: techsupport@elabscience.com

Fax: 1-832-243-6017

Recombinant Human RhoA Protein (His Tag)

Catalog Number:PKSH030838



the assembly of focal adhesions and actin stress fibers. RHOA / ARH12 serves as a target for the yopT cysteine peptidase from *Yersinia pestis*, vector of the plague, and *Yersinia pseudotuberculosis*, which causes gastrointestinal disorders. RHOA / ARH12 may be an activator of PLCE1. It is activated by ARHGEF2, which promotes the exchange of GDP for GTP.

For Research Use Only

A Reliable Research Partner in Life Science and Medicine

Toll-free: 1-888-852-8623

Tel: 1-832-243-6086

Fax: 1-832-243-6017

Web: www.elabscience.com

Email: techsupport@elabscience.com