

# Recombinant Human RhoA Protein (His Tag)

Catalog Number:PKSH030838



**Note:** Centrifuge before opening to ensure complete recovery of vial contents.

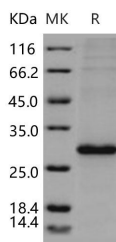
## Description

<b>Synonyms</b>	ARH12;ARHA;RHO12;RHOH12
<b>Species</b>	Human
<b>Expression Host</b>	Baculovirus-Insect Cells
<b>Sequence</b>	Met 1-Leu 193
<b>Accession</b>	P61586-1
<b>Calculated Molecular Weight</b>	24 kDa
<b>Observed molecular weight</b>	28 kDa
<b>Tag</b>	N-His

## Properties

<b>Purity</b>	> 90 % as determined by reducing SDS-PAGE.
<b>Endotoxin</b>	< 1.0 EU per µg of the protein as determined by the LAL method.
<b>Storage</b>	Generally, lyophilized proteins are stable for up to 12 months when stored at -20 to -80°C. Reconstituted protein solution can be stored at 4-8°C for 2-7 days. Aliquots of reconstituted samples are stable at < -20°C for 3 months.
<b>Shipping</b>	This product is provided as lyophilized powder which is shipped with ice packs.
<b>Formulation</b>	Lyophilized from sterile 20mM Tris, 500mM NaCl, pH 7.4, 10% glycerol Normally 5 % - 8 % trehalose, mannitol and 0.01% Tween80 are added as protectants before lyophilization. Please refer to the specific buffer information in the printed manual.
<b>Reconstitution</b>	Please refer to the printed manual for detailed information.

## Data



> 90 % as determined by reducing SDS-PAGE.

## Background

Transforming protein RhoA, also known as Rho cDNA clone 12, Ras homolog gene family member A, RHOA and ARH12, is a cell membrane and cytoplasm protein which belongs to the small GTPase superfamily and Rho family. The Rho family of small GTPases plays a key role in the dynamic regulation of the actin cytoskeleton that underlies various important cellular functions such as shape changes, migration, and polarity. RHOA / ARH12 is part of a larger family of related proteins known as the Ras superfamily; proteins involved in the regulation and timing of cell division. RHOA / ARH12 is a small GTPase protein known to regulate the actin cytoskeleton in the formation of stress fibers. It acts upon two known effector proteins: ROCK1 (Rho-associated, coiled-coil containing protein kinase 1) and DIAPH1 (diaphanous homolog 1 (Drosophila)). RHOA / ARH12 regulates a signal transduction pathway linking plasma membrane receptors to

## For Research Use Only

A Reliable Research Partner in Life Science and Medicine

Toll-free: 1-888-852-8623

Web: [www.elabscience.com](http://www.elabscience.com)

Tel: 1-832-243-6086

Email: [techsupport@elabscience.com](mailto:techsupport@elabscience.com)

Fax: 1-832-243-6017

# Recombinant Human RhoA Protein (His Tag)

Catalog Number:PKSH030838



the assembly of focal adhesions and actin stress fibers. RHOA / ARH12 serves as a target for the yopT cysteine peptidase from *Yersinia pestis*, vector of the plague, and *Yersinia pseudotuberculosis*, which causes gastrointestinal disorders. RHOA / ARH12 may be an activator of PLCE1. It is activated by ARHGEF2, which promotes the exchange of GDP for GTP.

---

## For Research Use Only

A Reliable Research Partner in Life Science and Medicine

Toll-free: 1-888-852-8623

Tel: 1-832-243-6086

Fax: 1-832-243-6017

Web: [www.elabscience.com](http://www.elabscience.com)

Email: [techsupport@elabscience.com](mailto:techsupport@elabscience.com)