

# Recombinant Human SIGLEC6/CD327 Protein (Fc Tag)

Catalog Number:PKSH030867



**Note:** Centrifuge before opening to ensure complete recovery of vial contents.

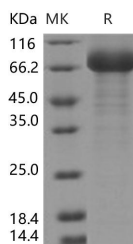
## Description

<b>Synonyms</b>	CD327;CD33L;CD33L1;CD33L2;CDW327;OBBP1;SIGLEC6
<b>Species</b>	Human
<b>Expression Host</b>	HEK293 Cells
<b>Sequence</b>	Gln27-Val331
<b>Accession</b>	O43699-3
<b>Calculated Molecular Weight</b>	60.7 kDa
<b>Observed molecular weight</b>	66-73 kDa
<b>Tag</b>	C-hFc

## Properties

<b>Purity</b>	> 90 % as determined by reducing SDS-PAGE.
<b>Endotoxin</b>	< 1.0 EU per µg of the protein as determined by the LAL method.
<b>Storage</b>	Generally, lyophilized proteins are stable for up to 12 months when stored at -20 to -80°C. Reconstituted protein solution can be stored at 4-8°C for 2-7 days. Aliquots of reconstituted samples are stable at < -20°C for 3 months.
<b>Shipping</b>	This product is provided as lyophilized powder which is shipped with ice packs.
<b>Formulation</b>	Lyophilized from sterile PBS, pH 7.4 Normally 5 % - 8 % trehalose, mannitol and 0.01 % Tween80 are added as protectants before lyophilization. Please refer to the specific buffer information in the printed manual.
<b>Reconstitution</b>	Please refer to the printed manual for detailed information.

## Data



> 90 % as determined by reducing SDS-PAGE.

## Background

SIGLEC6, also known as CD327, belongs to the immunoglobulin superfamily, SIGLEC (sialic acid binding Ig-like lectin) family. SIGLEC6 is a sialic acid recognizing protein expressed at high levels in placenta (cyto- and syncytiotrophoblastic cells) and at lower levels in spleen, peripheral blood leukocytes (predominantly B-cells) and small intestine. SIGLEC6 localizes in various compartments such as membrane fraction, extracellular region and so on. SIGLEC6 may show increasing expression human labor and following childbirth, it has been speculated that this expression helps to slow the tempo of human labor. Interestingly, expression of SIGLEC6 is further upregulated in pre-eclampsia, which appears to be a uniquely human disease.

## For Research Use Only

A Reliable Research Partner in Life Science and Medicine

Toll-free: 1-888-852-8623

Web: [www.elabscience.com](http://www.elabscience.com)

Tel: 1-832-243-6086

Email: [techsupport@elabscience.com](mailto:techsupport@elabscience.com)

Fax: 1-832-243-6017