

# Recombinant Human BCL6/B-cell CLL lymphoma 6 Protein (aa 1-150, His & Trx Tag)



Catalog Number:PKSH030910

**Note:** Centrifuge before opening to ensure complete recovery of vial contents.

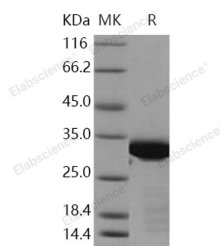
## Description

<b>Synonyms</b>	BCL5;BCL6A;LAZ3;ZBTB27;ZNF51
<b>Species</b>	Human
<b>Expression Host</b>	E.coli
<b>Sequence</b>	Met 1-Met 150
<b>Accession</b>	P41182
<b>Calculated Molecular Weight</b>	34.2 kDa
<b>Observed molecular weight</b>	33 kDa
<b>Tag</b>	N-Trx-His

## Properties

<b>Purity</b>	> 92 % as determined by reducing SDS-PAGE.
<b>Endotoxin</b>	Please contact us for more information.
<b>Storage</b>	Generally, lyophilized proteins are stable for up to 12 months when stored at -20 to -80°C. Reconstituted protein solution can be stored at 4-8°C for 2-7 days. Aliquots of reconstituted samples are stable at < -20°C for 3 months.
<b>Shipping</b>	This product is provided as lyophilized powder which is shipped with ice packs.
<b>Formulation</b>	Lyophilized from sterile 20mM Tris, 10% glycerol, pH 8.0 Normally 5 % - 8 % trehalose, mannitol and 0.01% Tween80 are added as protectants before lyophilization. Please refer to the specific buffer information in the printed manual.
<b>Reconstitution</b>	Please refer to the printed manual for detailed information.

## Data



> 92 % as determined by reducing SDS-PAGE.

## Background

The protein encoded by this gene is an evolutionarily conserved 95-kDa protein containing six C-terminal zinc-finger motifs and an N-terminal POZ domain. It has been reported that BCL-6 is present in DNA-binding complexes in nuclear extracts from various B-cell lines. There are many relationships between non-Hodgkin's lymphoma, diffuse large cell lymphoma and BCL6's translocations. BCL6 can repress transcription from promoters linked to its DNA target sequence and this activity is dependent upon specific DNA-binding and the presence of an intact N-terminal half of the protein.

## For Research Use Only

A Reliable Research Partner in Life Science and Medicine

Toll-free: 1-888-852-8623

Web: [www.elabscience.com](http://www.elabscience.com)

Tel: 1-832-243-6086

Email: [techsupport@elabscience.com](mailto:techsupport@elabscience.com)

Fax: 1-832-243-6017