

Recombinant Human WTAP Protein (GST Tag)

Catalog Number:PKSH030933



Note: Centrifuge before opening to ensure complete recovery of vial contents.

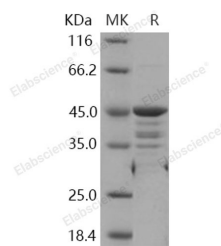
Description

Synonyms	Mum2
Species	Human
Expression Host	E.coli
Sequence	Met 1-Arg 151
Accession	Q15007-2
Calculated Molecular Weight	45 kDa
Observed molecular weight	45 kDa
Tag	N-GST

Properties

Purity	> 90 % as determined by reducing SDS-PAGE.
Endotoxin	Please contact us for more information.
Storage	Generally, lyophilized proteins are stable for up to 12 months when stored at -20 to -80°C. Reconstituted protein solution can be stored at 4-8°C for 2-7 days. Aliquots of reconstituted samples are stable at < -20°C for 3 months.
Shipping	This product is provided as lyophilized powder which is shipped with ice packs.
Formulation	Lyophilized from sterile 20mM Tris, 0.15M NaCl, 0.5mM GSH, pH 8.0 Normally 5 % - 8 % trehalose, mannitol and 0.01% Tween80 are added as protectants before lyophilization. Please refer to the specific buffer information in the printed manual.
Reconstitution	Please refer to the printed manual for detailed information.

Data



> 90 % as determined by reducing SDS-PAGE.

Background

Wilms' tumor 1-associating protein (WTAP) was previously identified as a protein associated with Wilms' tumor-1 (WT-1) protein that is essential for the development of the genitourinary system. WT1 was originally identified as a tumor suppressor for Wilms' tumor, but it is also overexpressed in a variety of cancer cells. The WTAP-WT1 axis in vascular cells suggest that WTAP is a vital and multifaceted regulator of vascular remodeling. WTAP has been suggested to function in alternative splicing, stabilization of mRNA, and cell growth. Knocking down endogenous WTAP increased Smooth muscle cells (SMCs) proliferation, because of increased DNA synthesis and G(1)/S phase transition, together with reduced apoptosis. These effects could be the result of WTAP suppressing the transcriptional activity of WT1 in SMCs. WTAP may thus also play a role in messenger RNA processing in mammalian cells, either dependent on or independent

For Research Use Only

A Reliable Research Partner in Life Science and Medicine

Toll-free: 1-888-852-8623

Web: www.elabscience.com

Tel: 1-832-243-6086

Email: techsupport@elabscience.com

Fax: 1-832-243-6017

Recombinant Human WTAP Protein (GST Tag)

Catalog Number:PKSH030933



of its interaction with WT1.

For Research Use Only

A Reliable Research Partner in Life Science and Medicine

Toll-free: 1-888-852-8623

Tel: 1-832-243-6086

Fax: 1-832-243-6017

Web: www.elabscience.com

Email: techsupport@elabscience.com