

Recombinant Human c-KIT/CD117 Protein (Fc Tag)

Catalog No. PKSH030941

Note: Centrifuge before opening to ensure complete recovery of vial contents.

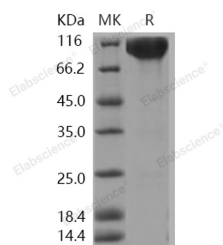
Description

Synonyms	Mast/stem cell growth factor receptor Kit;SCFR;Piebald trait protein;PBT;Proto-oncogene c-Kit;Tyrosine-protein kinase Kit;p145 c-kit;v-kit Hardy-Zuckerman 4 feline sarcoma viral oncogene homolog;CD117;PBT
Species	Human
Expression Host	HEK293 Cells
Sequence	Met 1-Thr516
Accession	P10721-2
Calculated Molecular Weight	82.0 kDa
Observed molecular weight	93-115 kDa
Tag	C-hFc
Bioactivity	Immobilized human KIT-Fc at 10 µg/ml (100 µl/well) can bind biotinylated mouse KITL-His (1-189), The EC50 of biotinylated mouse KITL-His (1-189)) is 2. 87-6. 71 ng/ml.

Properties

Purity	> 95 % as determined by reducing SDS-PAGE.
Endotoxin	< 1.0 EU per µg of the protein as determined by the LAL method.
Storage	Generally, lyophilized proteins are stable for up to 12 months when stored at -20 to -80°C. Reconstituted protein solution can be stored at 4-8°C for 2-7 days. Aliquots of reconstituted samples are stable at < -20°C for 3 months.
Shipping	This product is provided as lyophilized powder which is shipped with ice packs.
Formulation	Lyophilized from sterile PBS, pH 7.4 Normally 5 % - 8 % trehalose, mannitol and 0.01% Tween80 are added as protectants before lyophilization. Please refer to the specific buffer information in the printed manual.
Reconstitution	Please refer to the printed manual for detailed information.

Data



> 95 % as determined by reducing SDS-PAGE.

For Research Use Only

Background

C-Kit is a type 3 transmembrane receptor for MGF (mast cell growth factor; also known as stem cell factor). c-Kit contains 5 Ig-like C2-type (immunoglobulin-like) domains and 1 protein kinase domain. It belongs to the protein kinase superfamily; tyr protein kinase family and CSF-1/PDGF receptor subfamily. C-Kit contains 5 Ig-like C2-type (immunoglobulin-like) domains and 1 protein kinase domain. C-Kit has a tyrosine-protein kinase activity. Binding of the ligands leads to the autophosphorylation of KIT and its association with substrates such as phosphatidylinositol 3-kinase. Antibodies to c-Kit are widely used in immunohistochemistry to help distinguish particular types of tumour in histological tissue sections. It is used primarily in the diagnosis of GISTs. In GISTs; c-Kit staining is typically cytoplasmic; with stronger accentuation along the cell membranes. C-Kit antibodies can also be used in the diagnosis of mast cell tumours and in distinguishing seminomas from embryonal carcinomas. Mutations in c-Kit gene are associated with gastrointestinal stromal tumors; mast cell disease; acute myelogenous leukemia; and piebaldism. Defects in KIT are a cause of acute myelogenous leukemia (AML). AML is a malignant disease in which hematopoietic precursors are arrested in an early stage of development. Note=Somatic mutations that lead to constitutive activation of KIT are detected in AML patients.

For Research Use Only