

## Recombinant Human SIGLEC5 Protein (Fc Tag)

**Catalog No.** PKSH031000

**Note:** Centrifuge before opening to ensure complete recovery of vial contents.

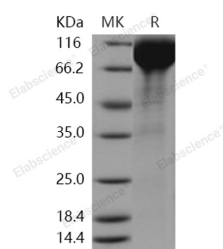
### Description

<b>Synonyms</b>	Sialic acid-binding Ig-like lectin 5;Siglec-5;CD33 antigen-like 2;Obesity-binding protein 2;OB-BP2;CD170;CD33L2;OB-BP2;OBBP;OBBP2;SIGLEC-5;SIGLEC5
<b>Species</b>	Human
<b>Expression Host</b>	HEK293 Cells
<b>Sequence</b>	Met 1-Thr 434
<b>Accession</b>	O15389
<b>Calculated Molecular Weight</b>	73.4 kDa
<b>Observed molecular weight</b>	74-93 kDa
<b>Tag</b>	C-hFc
<b>Bioactivity</b>	Not validated for activity

### Properties

<b>Purity</b>	> 90 % as determined by reducing SDS-PAGE.
<b>Endotoxin</b>	< 1.0 EU per µg of the protein as determined by the LAL method.
<b>Storage</b>	Generally, lyophilized proteins are stable for up to 12 months when stored at -20 to -80°C. Reconstituted protein solution can be stored at 4-8°C for 2-7 days. Aliquots of reconstituted samples are stable at < -20°C for 3 months.
<b>Shipping</b>	This product is provided as lyophilized powder which is shipped with ice packs.
<b>Formulation</b>	Lyophilized from sterile PBS, pH 7.4 Normally 5 % - 8 % trehalose, mannitol and 0.01% Tween80 are added as protectants before lyophilization. Please refer to the specific buffer information in the printed manual.
<b>Reconstitution</b>	Please refer to the printed manual for detailed information.

### Data



> 90 % as determined by reducing SDS-PAGE.

### Background

SIGLEC5 contains 2 Ig-like C2-type (immunoglobulin-like) domains and 1 Ig-like V-type (immunoglobulin-like) domain.

### For Research Use Only

It belongs to the immunoglobulin superfamily and SIGLEC (sialic acid binding Ig-like lectin) family. SIGLEC5 is expressed by monocytic/myeloid lineage cells. It is found at high levels in peripheral blood leukocytes; spleen; bone marrow and at lower levels in lymph node; lung; appendix; placenta; pancreas and thymus. It is also expressed by monocytes and neutrophils but absent from leukemic cell lines representing early stages of myelomonocytic differentiation. SIGLEC5 is a putative adhesion molecule that mediates sialic-acid dependent binding to cells. It binds equally to alpha-2;3-linked and alpha-2;6-linked sialic acid. The sialic acid recognition site may be masked by cis interactions with sialic acids on the same cell surface.