

Recombinant Human ALDH1A3 Protein (His Tag)

Catalog Number:PKSH031051



Note: Centrifuge before opening to ensure complete recovery of vial contents.

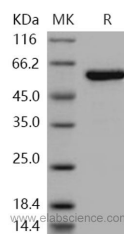
Description

Synonyms	Aldehyde dehydrogenase family 1 member A3; ALDH1A3; Aldehyde dehydrogenase 6; Retinaldehyde dehydrogenase 3; RALDH-3; ALDH6;ALDH1A6;MCOP8;RALDH3
Species	Human
Expression Host	E.coli
Sequence	Ala 2-Pro 512
Accession	NP_000684.2
Calculated Molecular Weight	57 kDa
Observed molecular weight	57 kDa
Tag	N-His

Properties

Purity	> 96 % as determined by reducing SDS-PAGE.
Endotoxin	Please contact us for more information.
Storage	Lyophilized proteins are stable for up to 12 months when stored at -20 to -80°C. Reconstituted protein solution can be stored at 4-8°C for 2-7 days. Aliquots of reconstituted samples are stable at < -20°C for 3 months.
Shipping	This product is provided as lyophilized powder which is shipped with ice packs.
Formulation	Lyophilized from sterile PBS, 0.5M NaCl, pH 8.0
Reconstitution	Please refer to the printed manual for detailed information.

Data



Background

Aldehyde dehydrogenase 1 family, member A3 (ALDH1A3), also known as Retinaldehyde dehydrogenase 3 (RALDH3), which belongs to the aldehyde dehydrogenase family. ALDH1A3 is a novel Cancer stem cell (CSC) marker with potential clinical prognostic applicability, and demonstrates a clear correlation between CSC prevalence and the development of metastatic breast cancer. The retinoic acid (RA) biosynthesis enzyme aldehyde dehydrogenase 1A3 (ALDH1A3) is a putative androgen-responsive gene in human prostate cancer epithelial (LNCaP) cells. The RA biosynthesis enzyme ALDH1A3 is androgen responsive and (ii) DHT up-regulation of ALDH1A3 can increase the oxidation of retinal to RA and indirectly affect RA bioactivity and metabolism.

For Research Use Only

A Reliable Research Partner in Life Science and Medicine

Toll-free: 1-888-852-8623

Web: www.elabscience.com

Tel: 1-832-243-6086

Email: techsupport@elabscience.com

Fax: 1-832-243-6017