

Recombinant Human SULT1E1/ST1E1 Protein (His Tag)



Catalog Number:PKSH031173

Note: Centrifuge before opening to ensure complete recovery of vial contents.

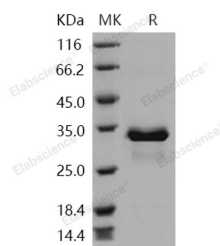
Description

Synonyms	EST;EST-1;MGC34459;ST1E1;STE
Species	Human
Expression Host	E.coli
Sequence	Asn 2-Ile 294
Accession	NP_005411.1
Calculated Molecular Weight	36.0 kDa
Observed molecular weight	33 kDa
Tag	N-His

Properties

Purity	> 92 % as determined by reducing SDS-PAGE.
Endotoxin	Please contact us for more information.
Storage	Generally, lyophilized proteins are stable for up to 12 months when stored at -20 to -80°C. Reconstituted protein solution can be stored at 4-8°C for 2-7 days. Aliquots of reconstituted samples are stable at < -20°C for 3 months.
Shipping	This product is provided as lyophilized powder which is shipped with ice packs.
Formulation	Lyophilized from sterile 20mM Tris 0.5M NaCl, 20% glycerol, pH 8.0 Normally 5 % - 8 % trehalose, mannitol and 0.01% Tween80 are added as protectants before lyophilization. Please refer to the specific buffer information in the printed manual.
Reconstitution	Please refer to the printed manual for detailed information.

Data



> 92 % as determined by reducing SDS-PAGE.

Background

Estrogen sulfotransferase, also known as Sulfotransferase, estrogen-preferring, Sulfotransferase 1E1, SULT1E1 and ST1E1, is a cytoplasm enzyme which belongs to the sulfotransferase 1 family. Sulfotransferase enzymes catalyze the sulfate conjugation of many hormones, neurotransmitters, drugs, and xenobiotic compounds. These cytosolic enzymes are different in their tissue distributions and substrate specificities. SULT1E1 may control the level of the estrogen receptor by sulfurylating free estradiol. SULT1E1 maximally sulfates beta-estradiol and estrone at concentrations of 20 nM. SULT1E1 also sulfates dehydroepiandrosterone, pregnenolone, ethinylestradiol, equalenin, diethylstilbesterol and 1-naphthol, at significantly higher concentrations; however, cortisol, testosterone and dopamine are not sulfated. SULT1E1 is a key enzyme in estrogen homeostasis. It plays a central role in the prevention and development of human

For Research Use Only

A Reliable Research Partner in Life Science and Medicine

Toll-free: 1-888-852-8623

Web: www.elabscience.com

Tel: 1-832-243-6086

Email: techsupport@elabscience.com

Fax: 1-832-243-6017

Recombinant Human SULT1E1/ST1E1 Protein (His Tag)

Catalog Number:PKSH031173



disease.

For Research Use Only

A Reliable Research Partner in Life Science and Medicine

Toll-free: 1-888-852-8623

Tel: 1-832-243-6086

Fax: 1-832-243-6017

Web: www.elabscience.com

Email: techsupport@elabscience.com