

## PE Anti-Human CD43 Antibody[HI161]

<b>Catalog No.</b>	E-AB-F1328D	<b>Reactivity</b>	Human
<b>Storage</b>	Store at 2~8°C, Avoid freeze / thaw cycles	<b>Applications</b>	FCM

**Important Note:** Centrifuge before opening to ensure complete recovery of vial contents.

### Antigen Information

<b>Alternate Names</b>	Ly-48, Leukosialin, Sialophorin, Leukocyte Sialoglycoprotein
<b>Uniprot ID</b>	P16150
<b>Gene ID</b>	6693
<b>Background</b>	CD43, also known as Ly-48, leukosialin, sialophorin, leukocyte sialoglycoprotein, and W3/13, is a large single chain, type I transmembrane glycoprotein with abundant O-glycosylation and sialylation sites. It has been reported that CD43 binds to CD54 and Siglec-1. CD43 plays dual roles in cell adhesion and anti-adhesion as well as costimulation of T cell activation and survival, and induction of apoptosis of T cells and hematopoietic progenitors.

### Product Details

<b>Form</b>	Liquid
<b>Size</b>	20Tests/100Tests/100Tests×2
<b>Clone No.</b>	HI161
<b>Host</b>	Mouse
<b>Isotype</b>	Mouse IgG1, κ
<b>Reactivity</b>	Human
<b>Application</b>	FCM
<b>Isotype Control</b>	<a href="#">PE Mouse IgG1, κ Isotype Control[MOPC-21] [Product E-AB-F09792D]</a>
<b>Storage Buffer</b>	Phosphate buffered solution, pH 7.2, containing 0.09% stabilizer and 1% protein protectant.
<b>Shipping</b>	Biological ice pack at 4 °C
<b>Stability &amp; Storage</b>	Keep as concentrated solution. Store at 2~8°C and protected from prolonged exposure to light.Do not freeze. This product is guaranteed up to one year from purchase.

### For Research Use Only

## Fluorophore

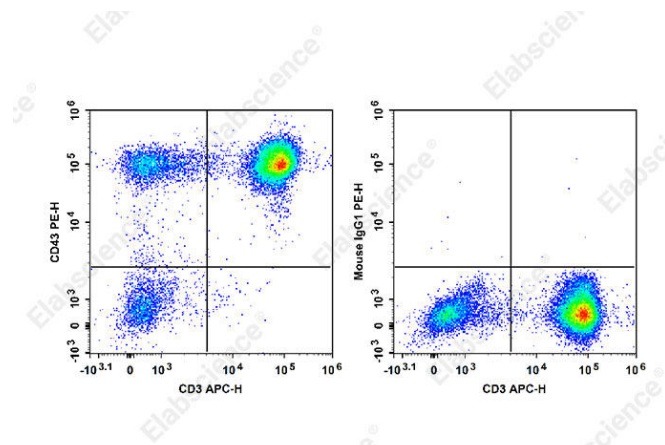
**Conjugation:** PE

PE is designed to be excited by the Blue (488 nm), Green (532 nm) and Yellow-Green (561 nm) lasers and detected using an optical filter centered near 575 nm (e.g., a 585/42 nm bandpass filter).

## Recommended usage

Each lot of this antibody is quality control tested by flow cytometric analysis. **The amount of the reagent is suggested to be used 5  $\mu$ L of antibody per test (million cells in 100  $\mu$ L staining volume or per 100  $\mu$ L of whole blood).** Please check your vial before the experiment. Since applications vary, the appropriate dilutions must be determined for individual use.

## Product data



Staining of normal human peripheral blood cells with APC Anti-Human CD3 Antibody and PE Anti-Human CD43 Antibody[HI161] (left) or PE Mouse IgG1,  $\kappa$  Isotype Control (right). Cells in the lymphocytes gate were used for analysis.

## Related Information

1. Sample Preparation for Flow Cytometry <https://www.elabscience.com/List-detail-5594.html>
2. Staining Cell Surface Targets for Flow Cytometry <https://www.elabscience.com/List-detail-5568.html>
3. Flow Cytometry Troubleshooting Tips <https://www.elabscience.com/List-detail-5593.html>
4. How to select the appropriate detection channel through the spectrogram? <https://www.elabscience.com/List-detail-459742.html>