

PE/Cyanine5 Anti-Human CD43 Antibody[HI161]

Catalog No.	E-AB-F1328G	Reactivity	Human
Storage	Store at 2~8°C, Avoid freeze / thaw cycles	Applications	FCM

Important Note: Centrifuge before opening to ensure complete recovery of vial contents.

Antigen Information

Alternate Names	Ly-48, Leukosialin, Sialophorin, Leukocyte Sialoglycoprotein
Uniprot ID	P16150
Gene ID	6693
Background	CD43, also known as Ly-48, leukosialin, sialophorin, leukocyte sialoglycoprotein, and W3/13, is a large single chain, type I transmembrane glycoprotein with abundant O-glycosylation and sialylation sites. It has been reported that CD43 binds to CD54 and Siglec-1. CD43 plays dual roles in cell adhesion and anti-adhesion as well as costimulation of T cell activation and survival, and induction of apoptosis of T cells and hematopoietic progenitors.

Product Details

Form	Liquid
Size	20Tests/100Tests/100Tests×2
Clone No.	HI161
Host	Mouse
Isotype	Mouse IgG1, κ
Reactivity	Human
Application	FCM
Isotype Control	[Product E-AB-F09792G]
Storage Buffer	Phosphate buffered solution, pH 7.2, containing 0.09% stabilizer and 1% protein protectant.
Shipping	Biological ice pack at 4 °C
Stability & Storage	Keep as concentrated solution. Store at 2~8°C and protected from prolonged exposure to light. Do not freeze. This product is guaranteed up to one year from purchase.

For Research Use Only

Fluorophore

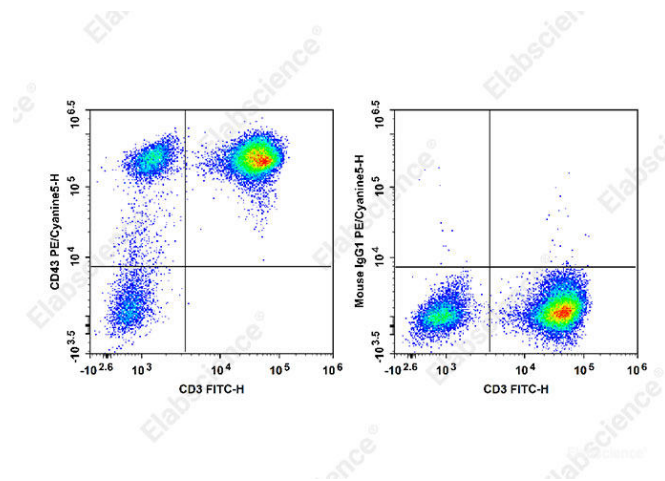
Conjugation: PE/Cyanine5

PE/Cyanine5 is designed to be excited by the Blue (488 nm), Green (532 nm) and yellow-green (561 nm) lasers and detected using an optical filter centered near 670 nm (e.g., a 690/50 nm bandpass filter).

Recommended usage

Each lot of this antibody is quality control tested by flow cytometric analysis. **The amount of the reagent is suggested to be used 5 µL of antibody per test (million cells in 100 µL staining volume or per 100 µL of whole blood).** Please check your vial before the experiment. Since applications vary, the appropriate dilutions must be determined for individual use.

Product data



Staining of normal human peripheral blood cells with FITC Anti-Human CD3 Antibody and PE/Cyanine5 Anti-Human CD43 Antibody [HI161] (left) or PE/Cyanine5 Mouse IgG1, κ Isotype Control (right). Cells in the lymphocytes gate were used for analysis.

Related Information

1. Sample Preparation for Flow Cytometry <https://www.elabscience.com/List-detail-5594.html>
2. Staining Cell Surface Targets for Flow Cytometry <https://www.elabscience.com/List-detail-5568.html>
3. Flow Cytometry Troubleshooting Tips <https://www.elabscience.com/List-detail-5593.html>
4. How to select the appropriate detection channel through the spectrogram? <https://www.elabscience.com/List-detail-459742.html>