

## PE Anti-Mouse CD226 Antibody[10E5]

<b>Catalog No.</b>	E-AB-F1402D	<b>Reactivity</b>	Mouse
<b>Storage</b>	Store at 2~8°C, Avoid freeze / thaw cycles	<b>Applications</b>	FCM

**Important Note:** Centrifuge before opening to ensure complete recovery of vial contents.

### Antigen Information

<b>Alternate Names</b>	DNAM-1;PTA1 (platelet and T cell activation antigen 1);TLISA1;LFA-1 associated Molecule PTA-1
<b>Uniprot ID</b>	Q8K4F0
<b>Gene ID</b>	225825
<b>Background</b>	CD226 (DNAM-1) is constitutively expressed on native CD8+ cells and on CD4+ T cells, macrophages and NK cells.This antibody (10E5) was reported to bind about 40% of inactivated CD4+ cells and binds only to differentiated Th1 cells, but not to Th2 or Th0 cells.It is also reported to suppress antigen-specific T cell expansion and EAE (experimental allergic encephalitis) mediated by Th1 cells.

### Product Details

<b>Form</b>	Liquid
<b>Size</b>	50Tests/100Tests/100Tests×2
<b>Clone No.</b>	10E5
<b>Host</b>	Rat
<b>Isotype</b>	Rat IgG2b, κ
<b>Reactivity</b>	Mouse
<b>Application</b>	FCM
<b>Isotype Control</b>	<a href="#">PE Rat IgG2b, κ Isotype Control[LTF-2] [Product E-AB-F09842D]</a>
<b>Storage Buffer</b>	PBS with 0.05% Proclin300, 1% Protein protectant
<b>Shipping</b>	Biological ice pack at 4 °C
<b>Stability &amp; Storage</b>	Keep as concentrated solution. Store at 2~8°C and protected from prolonged exposure to light.Do not freeze. This product is guaranteed up to one year from purchase.

### For Research Use Only

## Fluorophore

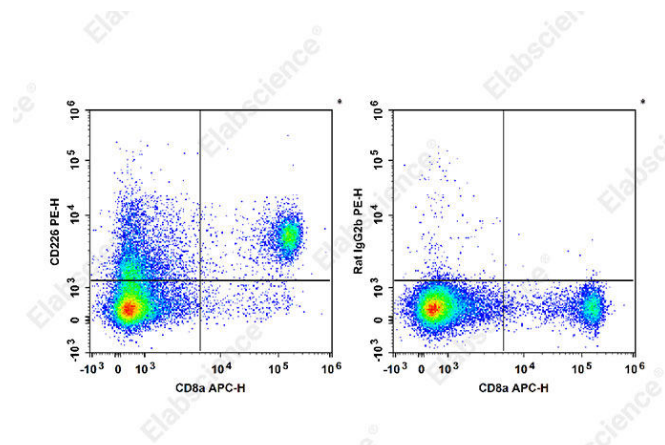
**Conjugation:** PE

PE is designed to be excited by the Blue (488 nm), Green (532 nm) and Yellow-Green (561 nm) lasers and detected using an optical filter centered near 575 nm (e.g., a 585/42 nm bandpass filter).

## Recommended usage

Each lot of this antibody is quality control tested by immunofluorescent staining with flow cytometric analysis. The amount of the reagent is suggested to be used 5  $\mu$ L of antibody per test (million cells in 100  $\mu$ L staining volume or per 100  $\mu$ L of whole blood). Please check your vial before the experiment. Since applications vary, the appropriate dilutions must be determined for individual use.

## Product data



Staining of C57BL/6 murine splenocytes with APC Anti-Mouse CD8a Antibody and PE Anti-Mouse CD226 Antibody[10E5] (left) or PE Rat IgG2b,  $\kappa$  Isotype Control (right). Total viable cells were used for analysis.

## Related Information

1. Sample Preparation for Flow Cytometry <https://www.elabscience.com/List-detail-5594.html>
2. Staining Cell Surface Targets for Flow Cytometry <https://www.elabscience.com/List-detail-5568.html>
3. Flow Cytometry Troubleshooting Tips <https://www.elabscience.com/List-detail-5593.html>
4. How to select the appropriate detection channel through the spectrogram? <https://www.elabscience.com/List-detail-459742.html>