

# Recombinant Human SerpinA6/CBG protein (His tag)

Catalog Number:PKSH031314



**Note:** Centrifuge before opening to ensure complete recovery of vial contents.

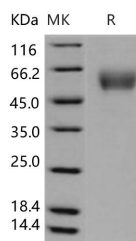
## Description

<b>Synonyms</b>	Corticosteroid-Binding Globulin, CBG, Serpin A6, Transcortin, SERPINA6, CBG
<b>Species</b>	Human
<b>Expression Host</b>	HEK293 Cells
<b>Sequence</b>	Met 1-Val 405
<b>Accession</b>	P08185
<b>Calculated Molecular Weight</b>	44 kDa
<b>Observed molecular weight</b>	60 kDa
<b>Tag</b>	C-His
<b>Bioactivity</b>	Testing in progress

## Properties

<b>Purity</b>	> 95 % as determined by reducing SDS-PAGE.
<b>Endotoxin</b>	Please contact us for more information.
<b>Storage</b>	Generally, lyophilized proteins are stable for up to 12 months when stored at -20 to -80°C. Reconstituted protein solution can be stored at 4-8°C for 2-7 days. Aliquots of reconstituted samples are stable at < -20°C for 3 months.
<b>Shipping</b>	This product is provided as lyophilized powder which is shipped with ice packs.
<b>Formulation</b>	Lyophilized from sterile PBS, pH 7.4. Normally 5 % - 8 % trehalose, mannitol and 0.01% Tween80 are added as protectants before lyophilization. Please refer to the specific buffer information in the printed manual.
<b>Reconstitution</b>	Please refer to the printed manual for detailed information.

## Data



> 95 % as determined by reducing SDS-PAGE.

## Background

Corticosteroid-binding globulin (CBG), also known as SerpinA6, is a non-inhibitory member of the serine proteinase inhibitor (serpin) superfamily. It is the high-affinity transport protein for glucocorticoids in vertebrate blood. CBG is specifically cleaved by this protease at a precise site close to its carboxy-terminus. This induces a conformation change and disrupts the binding between glucocorticoids and CBG, and promotes a significant and local release of glucocorticoids (over 90% of them are bound to CBG in human plasma). In this context, CBG directs glucocorticoids to sites of inflammation, and plays in consequence a crucial role in efficient glucocorticoid action in physiology. The SerpinA6 protein is mainly secreted by the liver. This negative acute phase protein regulates free cortisol levels in the blood and

## For Research Use Only

A Reliable Research Partner in Life Science and Medicine

Toll-free: 1-888-852-8623

Web: [www.elabscience.com](http://www.elabscience.com)

Tel: 1-832-243-6086

Email: [techsupport@elabscience.com](mailto:techsupport@elabscience.com)

Fax: 1-832-243-6017

# Recombinant Human SerpinA6/CBG protein (His tag)

Catalog Number:PKSH031314



distributes cortisol to its target tissues. SerpinA6 deficiency is an extremely rare hereditary disorder characterized by reduced corticosteroid-binding capacity with normal or low plasma corticosteroid-binding globulin concentration, and normal or low basal cortisol levels associated with hypo-/hypertension and muscle fatigue. There are three heritable, human CBG gene mutations that can reduce CBG-cortisol binding affinity and/or reduce circulating CBG levels.

---

## For Research Use Only

A Reliable Research Partner in Life Science and Medicine

Toll-free: 1-888-852-8623

Tel: 1-832-243-6086

Fax: 1-832-243-6017

Web: [www.elabscience.com](http://www.elabscience.com)

Email: [techsupport@elabscience.com](mailto:techsupport@elabscience.com)