

Recombinant Human IL6ST/CD130 Protein

Catalog Number:PKSH031329



Note: Centrifuge before opening to ensure complete recovery of vial contents.

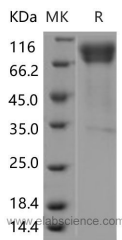
Description

Synonyms	CD130;CDW130;GP130;IL-6RB
Species	Human
Expression Host	HEK293 Cells
Sequence	Met1-Ile618
Accession	NP_002175.2
Calculated Molecular Weight	68.6 kDa
Observed molecular weight	69-99 kDa
Tag	No tag

Properties

Purity	> 90 % as determined by reducing SDS-PAGE.
Endotoxin	< 1.0 EU per µg as determined by the LAL method.
Storage	Generally, lyophilized proteins are stable for up to 12 months when stored at -20 to -80°C. Reconstituted protein solution can be stored at 4-8°C for 2-7 days. Aliquots of reconstituted samples are stable at < -20°C for 3 months.
Shipping	This product is provided as lyophilized powder which is shipped with ice packs.
Formulation	Lyophilized from sterile PBS, pH 7.4
Reconstitution	Please refer to the printed manual for detailed information.

Data



Background

Glycoprotein 130 (also known as gp130, IL6ST, IL6-beta or CD130) is a transmembrane protein which is the founding member of the class of all cytokine receptors. CD130/gp130 is a signal transducer shared by many cytokines, including interleukin 6 (IL6), ciliary neurotrophic factor (CNTF), leukemia inhibitory factor (LIF), and Oncostatin M (OSM). CD130/gp130 functions as a part of the cytokine receptor complex. The activation of this protein is dependent upon the binding of cytokines to their receptors. CD130/gp130 plays a critical role in regulating myocyte apoptosis. Alternatively spliced transcript variants encoding distinct isoforms have been described. A related pseudogene has been identified on chromosome 17. The receptor systems for IL6, LIF, OSM, CNTF, IL11, CTF1 and BSF3 can utilize gp130 for initiating signal transmission. CD130/gp130 binds to IL6/IL6R (alpha chain) complex, resulting in the formation of high-affinity IL6 binding sites, and transduces the signal. CD130/gp130 may have a role in embryonic development. The type I OSM receptor is capable of transducing OSM-specific signaling events.

For Research Use Only

A Reliable Research Partner in Life Science and Medicine

Toll-free: 1-888-852-8623

Web: www.elabscience.com

Tel: 1-832-243-6086

Email: techsupport@elabscience.com

Fax: 1-832-243-6017