

# Recombinant Human S100A6 Protein

Catalog Number:PKSH031346



**Note:** Centrifuge before opening to ensure complete recovery of vial contents.

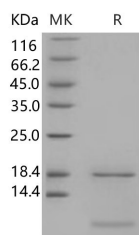
## Description

<b>Synonyms</b>	S100A6;Protein S100-A6;Calcyclin;Growth factor-inducible protein 2A9;MLN 4;Prolactin receptor-associated protein;PRA;S100 calcium-binding protein A6;CACY;2A9;5B10;CABP;PRA
<b>Species</b>	Human
<b>Expression Host</b>	E.coli
<b>Sequence</b>	Met 1-Gly 90
<b>Accession</b>	NP_055439.1
<b>Calculated Molecular Weight</b>	10.2 kDa
<b>Observed molecular weight</b>	10 kDa
<b>Tag</b>	None

## Properties

<b>Purity</b>	> 95 % as determined by reducing SDS-PAGE.
<b>Endotoxin</b>	Please contact us for more information.
<b>Storage</b>	Generally, lyophilized proteins are stable for up to 12 months when stored at -20 to -80°C. Reconstituted protein solution can be stored at 4-8°C for 2-7 days. Aliquots of reconstituted samples are stable at < -20°C for 3 months.
<b>Shipping</b>	This product is provided as lyophilized powder which is shipped with ice packs.
<b>Formulation</b>	Lyophilized from sterile PBS, pH 7.4 Normally 5 % - 8 % trehalose, mannitol and 0.01 % Tween80 are added as protectants before lyophilization. Please refer to the specific buffer information in the printed manual.
<b>Reconstitution</b>	Please refer to the printed manual for detailed information.

## Data



> 95 % as determined by reducing SDS-PAGE.

## Background

S100 proteins are a family of low molecular weight proteins found in vertebrates characterized by two EF-hand calcium-binding motifs. There are at least 21 different S100 proteins; and the name is derived from the fact that the protein is 100% soluble in ammonium sulfate at neutral pH. Most S100 proteins are disulfide-linked homodimers; and are normally present in cells derived from the neural crest; chondrocytes; macrophages; dendritic cells; etc. S100 proteins have been implicated in a variety of intracellular and extracellular functions. They are involved in regulation of protein phosphorylation; transcription factors; the dynamics of cytoskeleton constituents; enzyme activities; cell growth and

## For Research Use Only

A Reliable Research Partner in Life Science and Medicine

Toll-free: 1-888-852-8623

Web: [www.elabscience.com](http://www.elabscience.com)

Tel: 1-832-243-6086

Email: [techsupport@elabscience.com](mailto:techsupport@elabscience.com)

Fax: 1-832-243-6017

# Recombinant Human S100A6 Protein

Catalog Number:PKSH031346



differentiation; and the inflammatory response. S100A6 (S100 calcium binding protein A6) is a member of the S100 family of proteins; and functions in prolactin secretion; and exocytosis. Chromosomal rearrangements and altered expression of S100A6 have been implicated in melanoma.

---

## For Research Use Only

A Reliable Research Partner in Life Science and Medicine

Toll-free: 1-888-852-8623

Tel: 1-832-243-6086

Fax: 1-832-243-6017

Web: [www.elabscience.com](http://www.elabscience.com)

Email: [techsupport@elabscience.com](mailto:techsupport@elabscience.com)