

Recombinant Human ENTPD3/NTPDase3/CD39L3 Protein (His Tag)



Catalog Number:PKSH031361

Note: Centrifuge before opening to ensure complete recovery of vial contents.

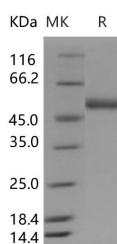
Description

Synonyms	CD39L3;HB6;NTPDase-3
Species	Human
Expression Host	Baculovirus-Insect Cells
Sequence	Gln 44-Pro 485
Accession	O75355
Calculated Molecular Weight	51.0 kDa
Observed molecular weight	50 kDa
Tag	C-His
Bioactivity	Measured by its ability to hydrolyze the 5'-phosphate group from the substrate adenosine-5'-triphosphate (ATP). The orthophosphate product is measured by a Malachite Green Phosphate Detection Kit. The specific activity is > 70, 000 pmol/min/μg.

Properties

Purity	> 97 % as determined by reducing SDS-PAGE.
Endotoxin	< 1.0 EU per μg of the protein as determined by the LAL method.
Storage	Generally, lyophilized proteins are stable for up to 12 months when stored at -20 to -80°C. Reconstituted protein solution can be stored at 4-8°C for 2-7 days. Aliquots of reconstituted samples are stable at < -20°C for 3 months.
Shipping	This product is provided as lyophilized powder which is shipped with ice packs.
Formulation	Lyophilized from sterile 20mM Tris, 500mM NaCl, pH 7.4, 10% glycerol Normally 5 % - 8 % trehalose, mannitol and 0.01% Tween80 are added as protectants before lyophilization. Please refer to the specific buffer information in the printed manual.
Reconstitution	Please refer to the printed manual for detailed information.

Data



> 97 % as determined by reducing SDS-PAGE.

Background

The ADAMs (a disintegrin and metalloprotease) comprise a family of multidomain proteins with metalloprotease, cell adhesion, and signaling activities. Human ADAM12, which is implicated in diseases such as cancer, is expressed in two splice forms, the transmembrane ADAM12-L and the shorter and soluble ADAM12-S. ADAM12, also known as and Meltrin alpha, is a member of the ADAM protein family, which contains one disintegrin domain, one EGF-like domain

For Research Use Only

A Reliable Research Partner in Life Science and Medicine

Toll-free: 1-888-852-8623

Web: www.elabscience.com

Tel: 1-832-243-6086

Email: techsupport@elabscience.com

Fax: 1-832-243-6017

Recombinant Human ENTPD3/NTPDase3/CD39L3 Protein (His Tag)

DIA • AN®
by Elabscience

Catalog Number:PKSH031361

and one peptidase M12B domain. ADAM12 is synthesized as a zymogen with the prodomain keeping the metalloprotease inactive through a cysteine-switch mechanism. Maturation and activation of the protease involves the cleavage of the prodomain in the trans-Golgi or possibly at the cell surface by a furin-peptidase. It is a membrane-anchored metalloprotease, which has been implicated in activation-inactivation of growth factors that play an important role in wound healing, including heparin-binding epidermal growth factor (EGF)-like growth factor (HB-EGF) and IGF binding proteins. ADAM12 may also regulate cell-cell and cell-extracellular matrix contacts through interactions with cell surface receptors - integrins and syndecans - potentially influencing the actin cytoskeleton. Moreover, ADAM12 interacts with several cytoplasmic signaling and adaptor molecules through its intracellular domain, thereby directly transmitting signals to or from the cell interior. These ADAM12-mediated cellular effects appear to be critical events in both biological and pathological processes.

For Research Use Only

A Reliable Research Partner in Life Science and Medicine

Toll-free: 1-888-852-8623

Web: www.elabscience.com

Tel: 1-832-243-6086

Email: techsupport@elabscience.com

Fax: 1-832-243-6017