

# Recombinant Human 14-3-3 eta/YWHAH Protein (GST Tag)



Catalog Number:PKSH031391

**Note:** Centrifuge before opening to ensure complete recovery of vial contents.

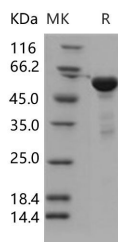
## Description

<b>Synonyms</b>	YWHA1
<b>Species</b>	Human
<b>Expression Host</b>	E.coli
<b>Sequence</b>	Gly 2-Asn 246
<b>Accession</b>	Q04917
<b>Calculated Molecular Weight</b>	55.0 kDa
<b>Observed molecular weight</b>	55 kDa
<b>Tag</b>	N-GST

## Properties

<b>Purity</b>	> 90 % as determined by reducing SDS-PAGE.
<b>Endotoxin</b>	Please contact us for more information.
<b>Storage</b>	Generally, lyophilized proteins are stable for up to 12 months when stored at -20 to -80°C. Reconstituted protein solution can be stored at 4-8°C for 2-7 days. Aliquots of reconstituted samples are stable at < -20°C for 3 months.
<b>Shipping</b>	This product is provided as lyophilized powder which is shipped with ice packs.
<b>Formulation</b>	Lyophilized from sterile 20mM Tris, 0.15M NaCl, 20mM GST, pH 8.0 Normally 5 % - 8 % trehalose, mannitol and 0.01% Tween80 are added as protectants before lyophilization. Please refer to the specific buffer information in the printed manual.
<b>Reconstitution</b>	Please refer to the printed manual for detailed information.

## Data



> 90 % as determined by reducing SDS-PAGE.

## Background

YWHAH, the gene encoding the 14-3-3eta isoform, is highly expressed in retinal ganglion cells (RGC). YWHAH is a positional and functional candidate gene for both schizophrenia and bipolar disorder (BP). It is located on chromosome 22q12.3, a region which has been implicated by linkage studies in both BP and schizophrenia.

## For Research Use Only

A Reliable Research Partner in Life Science and Medicine

Toll-free: 1-888-852-8623

Web: [www.elabscience.com](http://www.elabscience.com)

Tel: 1-832-243-6086

Email: [techsupport@elabscience.com](mailto:techsupport@elabscience.com)

Fax: 1-832-243-6017