

Recombinant Human AKT1/PKB/PKB α Protein (His Tag)



Catalog Number:PKSH031439

Note: Centrifuge before opening to ensure complete recovery of vial contents.

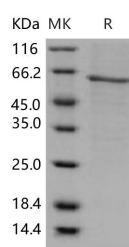
Description

Synonyms	AKT;CWS6;PKB;PKB-ALPHA;PRKBA;RAC;RAC-ALPHA
Species	Human
Expression Host	Baculovirus-Insect Cells
Sequence	Met 1-Ala 480
Accession	NP_001014431.1
Calculated Molecular Weight	57.0 kDa
Observed molecular weight	57 kDa
Tag	C-His
Bioactivity	1. No Kinase Activity 2. Measured by its ability to bind biotinylated human CD136 in a functional ELISA.

Properties

Purity	> 87 % as determined by reducing SDS-PAGE.
Endotoxin	< 1.0 EU per μ g of the protein as determined by the LAL method.
Storage	Generally, lyophilized proteins are stable for up to 12 months when stored at -20 to -80°C. Reconstituted protein solution can be stored at 4-8°C for 2-7 days. Aliquots of reconstituted samples are stable at < -20°C for 3 months.
Shipping	This product is provided as lyophilized powder which is shipped with ice packs.
Formulation	Lyophilized from sterile 50mM Tris, 100mM NaCl, 3mM DTT, 0.5mM PMSF, 5% Glycerol, pH 8.0 Normally 5 % - 8 % trehalose, mannitol and 0.01% Tween80 are added as protectants before lyophilization. Please refer to the specific buffer information in th
Reconstitution	Please refer to the printed manual for detailed information.

Data



> 87 % as determined by reducing SDS-PAGE.

Background

v-akt murine thymoma viral oncogene homolog 1 (AKT1), or protein kinase B-alpha (PKB-ALPHA) is a serine-threonine protein kinase, belonging to the Protein Kinase Superfamily. AKT1 is a major mediator of the responses to insulin, insulin-like growth factor 1 (IGF1), and glucose. AKT1 also plays a key role in the regulation of both muscle cell hypertrophy and atrophy. AKT1 activity is required for physiologic cardiac growth in response to IGF1 stimulation or exercise training. In contrast, AKT1 activity was found to antagonize pathologic cardiac growth that occurs in response to

For Research Use Only

A Reliable Research Partner in Life Science and Medicine

Toll-free: 1-888-852-8623

Web: www.elabscience.com

Tel: 1-832-243-6086

Email: techsupport@elabscience.com

Fax: 1-832-243-6017

Recombinant Human AKT1/PKB/PKB α Protein (His Tag)



Catalog Number:PKSH031439

endothelin 1 stimulation or pressure overload. AKT1 selectively promotes physiological cardiac growth while AKT2 selectively promotes insulin-stimulated cardiac glucose metabolism. AKT1 deletion prevented tumor initiation as well as tumor progression, coincident with decreased Akt signaling in tumor tissues. AKT1 is the primary Akt isoform activated by mutant K-ras in lung tumors, and that AKT3 may oppose AKT1 in lung tumorigenesis and lung tumor progression. A number of separate studies have implicated AKT1 as an inhibitor of breast epithelial cell motility and invasion. AKT1 may have a dual role in tumorigenesis, acting not only pro-oncogenically by suppressing apoptosis but also anti-oncogenically by suppressing invasion and metastasis.

For Research Use Only

A Reliable Research Partner in Life Science and Medicine

Toll-free: 1-888-852-8623

Tel: 1-832-243-6086

Fax: 1-832-243-6017

Web: www.elabscience.com

Email: techsupport@elabscience.com