

# Recombinant Human LIFR/CD118 Protein (His Tag)

Catalog Number:PKSH031500



**Note:** Centrifuge before opening to ensure complete recovery of vial contents.

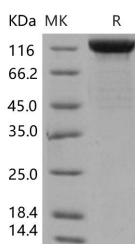
## Description

<b>Synonyms</b>	CD118;LIF-R;SJS2;STWS;SWS
<b>Species</b>	Human
<b>Expression Host</b>	HEK293 Cells
<b>Sequence</b>	Met 1-Ser 833
<b>Accession</b>	NP_001121143.1
<b>Calculated Molecular Weight</b>	91.0 kDa
<b>Observed molecular weight</b>	125-135 kDa
<b>Tag</b>	C-His
<b>Bioactivity</b>	Immobilized LIF Protein, Human, Recombinant (hFc Tag) at 2 ug/mL (100 $\mu$ L/well) can bind LIFR Protein Human, Recombinant (His Tag), the EC50 is 60-360 ng/mL.

## Properties

<b>Purity</b>	> 90 % as determined by reducing SDS-PAGE.
<b>Endotoxin</b>	< 1.0 EU per $\mu$ g of the protein as determined by the LAL method.
<b>Storage</b>	Generally, lyophilized proteins are stable for up to 12 months when stored at -20 to -80°C. Reconstituted protein solution can be stored at 4-8°C for 2-7 days. Aliquots of reconstituted samples are stable at < -20°C for 3 months.
<b>Shipping</b>	This product is provided as lyophilized powder which is shipped with ice packs.
<b>Formulation</b>	Lyophilized from sterile PBS, pH 7.4 Normally 5 % - 8 % trehalose, mannitol and 0.01% Tween80 are added as protectants before lyophilization. Please refer to the specific buffer information in the printed manual.
<b>Reconstitution</b>	Please refer to the printed manual for detailed information.

## Data



> 90 % as determined by reducing SDS-PAGE.

## Background

LIFR (leukemia inhibitory factor receptor) belongs to the family of cytokine receptors. LIFR forms a high-affinity receptor complex with gp130, which mediates the activity of LIF (leukemia inhibitory factor) and thus affects the differentiation, proliferation, and survival of a wide variety of cells in the adult and the embryo. Besides LIF, LIFR can also bind to and activate CNTF (ciliary neurotrophic factor) and CLC (cardiotrophin like cytokine). Evidence showed that in the retina, LIFR activating LIF, CT-1 and cardiotrophin like cytokine (CLC) are strongly upregulated in response to

## For Research Use Only

A Reliable Research Partner in Life Science and Medicine

Toll-free: 1-888-852-8623

Web: [www.elabscience.com](http://www.elabscience.com)

Tel: 1-832-243-6086

Email: [techsupport@elabscience.com](mailto:techsupport@elabscience.com)

Fax: 1-832-243-6017

# Recombinant Human LIFR/CD118 Protein (His Tag)

Catalog Number:PKSH031500



preconditioning with bright cyclic light leading to robust activation of signal transducer and activator of transcription-3 (STAT3) in a time-dependent manner. Further, blocking LIFR activation during preconditioning using a LIFR antagonist (LIF05) attenuated the induced STAT3 activation and also resulted in reduced preconditioning-induced protection of the retinal photoreceptors. These data demonstrate that LIFR and its ligands play an essential role in endogenous neuroprotective mechanisms triggered by preconditioning-induced stress. LIFR was newly found to be a suppressor of hepatocellular carcinoma (HCC), one of the world's top five causes of cancer-related deaths.

---

## For Research Use Only

A Reliable Research Partner in Life Science and Medicine

Toll-free: 1-888-852-8623

Tel: 1-832-243-6086

Fax: 1-832-243-6017

Web: [www.elabscience.com](http://www.elabscience.com)

Email: [techsupport@elabscience.com](mailto:techsupport@elabscience.com)