

# Recombinant Human Cathepsin A/CTSA Protein (His Tag)



Catalog Number:PKSH031576

**Note:** Centrifuge before opening to ensure complete recovery of vial contents.

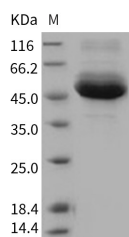
## Description

<b>Synonyms</b>	Lysosomal protective protein;CTSA;Carboxypeptidase C;Carboxypeptidase L;Cathepsin A;GLB2;GSL;NGBE;PPCA;PPGB
<b>Species</b>	Human
<b>Expression Host</b>	HEK293 Cells
<b>Sequence</b>	Met 1-Tyr 480
<b>Accession</b>	NP_001121167.1
<b>Calculated Molecular Weight</b>	53.0 kDa
<b>Observed molecular weight</b>	53 kDa
<b>Tag</b>	C-His

## Properties

<b>Purity</b>	> 90 % as determined by reducing SDS-PAGE.
<b>Endotoxin</b>	< 1.0 EU per µg of the protein as determined by the LAL method.
<b>Storage</b>	Generally, lyophilized proteins are stable for up to 12 months when stored at -20 to -80°C. Reconstituted protein solution can be stored at 4-8°C for 2-7 days. Aliquots of reconstituted samples are stable at < -20°C for 3 months.
<b>Shipping</b>	This product is provided as lyophilized powder which is shipped with ice packs.
<b>Formulation</b>	Lyophilized from sterile 25mM Tris, 0.15mM NaCl, pH 7.5 Normally 5 % - 8 % trehalose, mannitol and 0.01% Tween80 are added as protectants before lyophilization. Please refer to the specific buffer information in the printed manual.
<b>Reconstitution</b>	Please refer to the printed manual for detailed information.

## Data



> 90 % as determined by reducing SDS-PAGE.

## Background

Lysosomal carboxypeptidase, cathepsin A (protective protein, CathA), is a component of the lysosomal multienzyme complex along with beta-galactosidase (GAL) and sialidase Neu1, where it activates Neu1 and protects GAL and Neu1 against the rapid proteolytic degradation. Cathepsin A is a multicatalytic enzyme with deamidase and esterase in addition to carboxypeptidase activities. It was recently identified in human platelets as deamidase. In vitro, it hydrolyzes a variety of bioactive peptide hormones including tachykinins, suggesting that extralysosomal cathepsin A plays a role in regulation of bioactive peptide functions. It is a member of the alpha/beta hydrolase fold family and has been suggested to share a common ancestral relationship with other alpha/beta hydrolase fold enzymes, such as cholinesterases. Cathepsin A defects

## For Research Use Only

A Reliable Research Partner in Life Science and Medicine

Toll-free: 1-888-852-8623

Web: [www.elabscience.com](http://www.elabscience.com)

Tel: 1-832-243-6086

Email: [techsupport@elabscience.com](mailto:techsupport@elabscience.com)

Fax: 1-832-243-6017

# Recombinant Human Cathepsin A/CTSA Protein (His Tag)

Catalog Number:PKSH031576

**DIA • AN**®  
by Elabscience

---

are linked to multiple forms of Galactosialidosis with a combined secondary deficiency of beta-galactosidase and neuraminidase. Cathepsin A is a key molecule in the onset of galactosialidosis and also highlight the therapeutic acts in vivo as an endothelin-1-inactivating enzyme and strongly confirm a crucial role of this enzyme in effective elastic fiber formation.

---

## For Research Use Only

A Reliable Research Partner in Life Science and Medicine

Toll-free: 1-888-852-8623

Tel: 1-832-243-6086

Fax: 1-832-243-6017

Web: [www.elabscience.com](http://www.elabscience.com)

Email: [techsupport@elabscience.com](mailto:techsupport@elabscience.com)